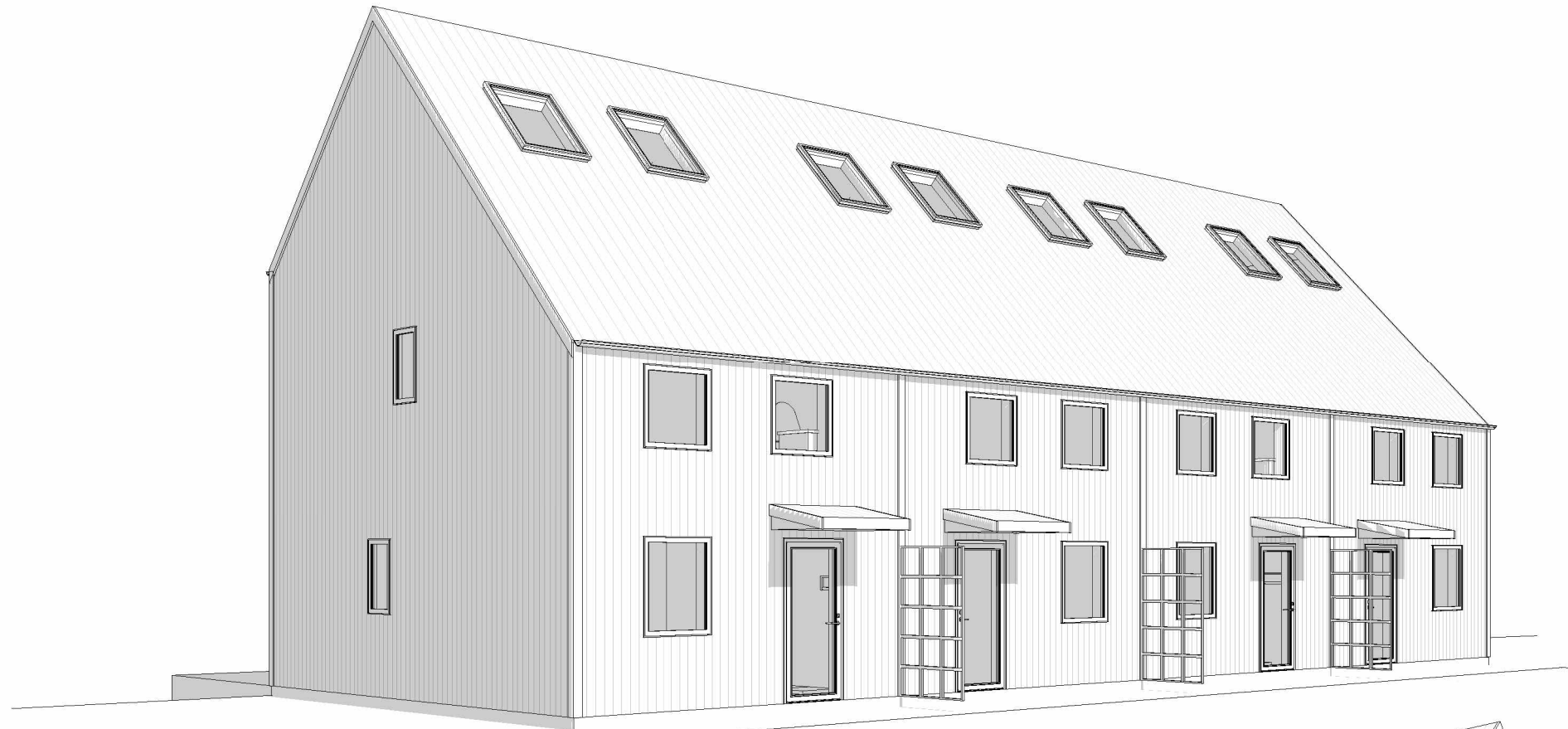


Sicklaön 374:1

Nybyggnation





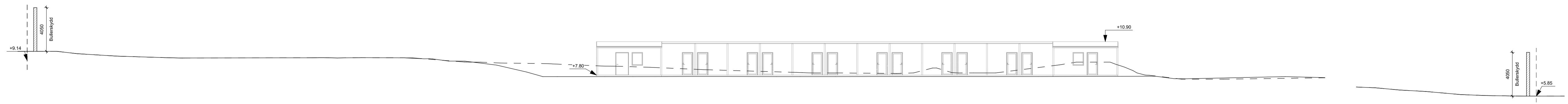
0 1 2 3 4 5 10m



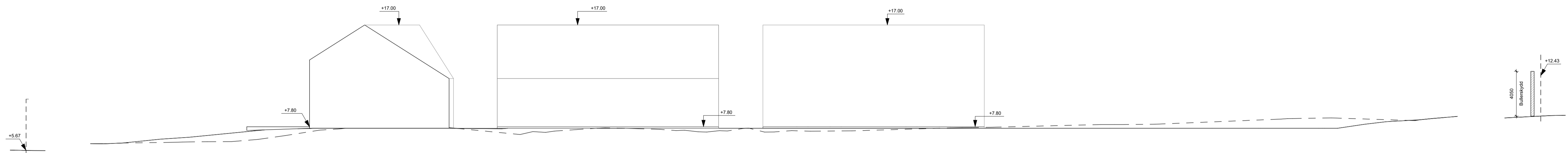
SKALA 1:100



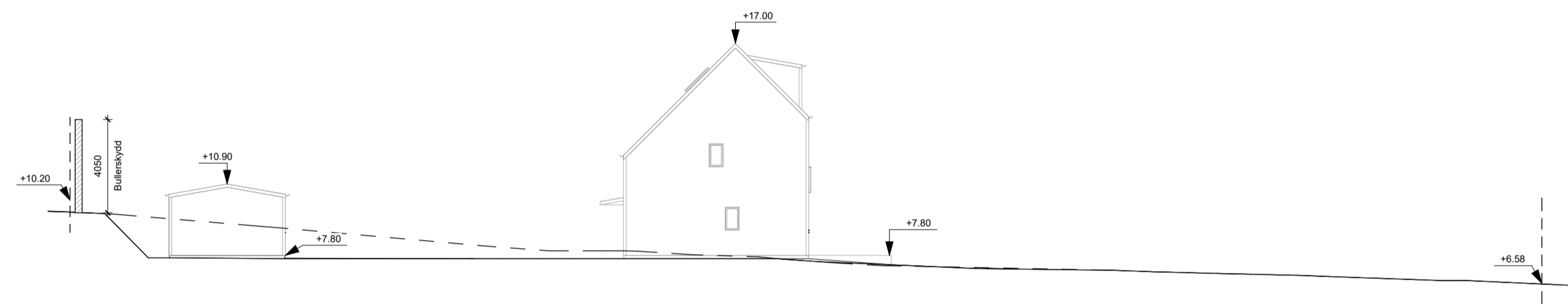
BygglövsExperterna



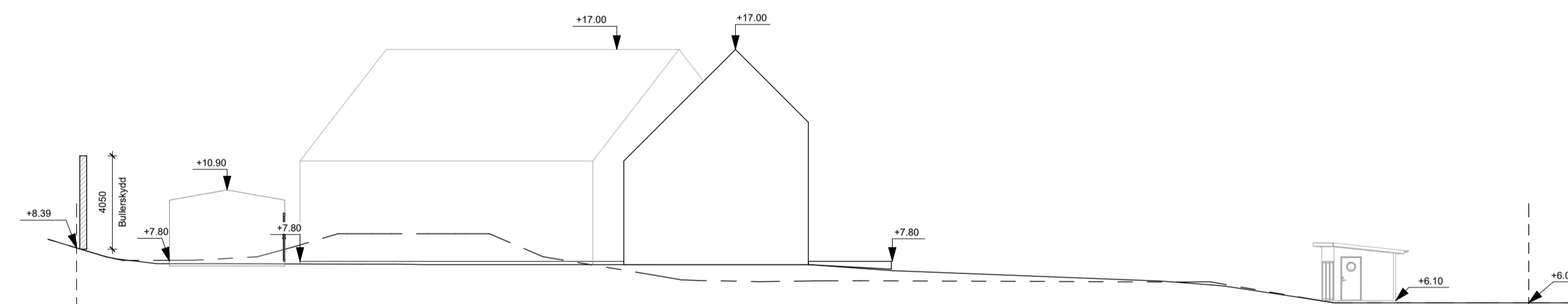
MARKSEKTION 1
1 : 200



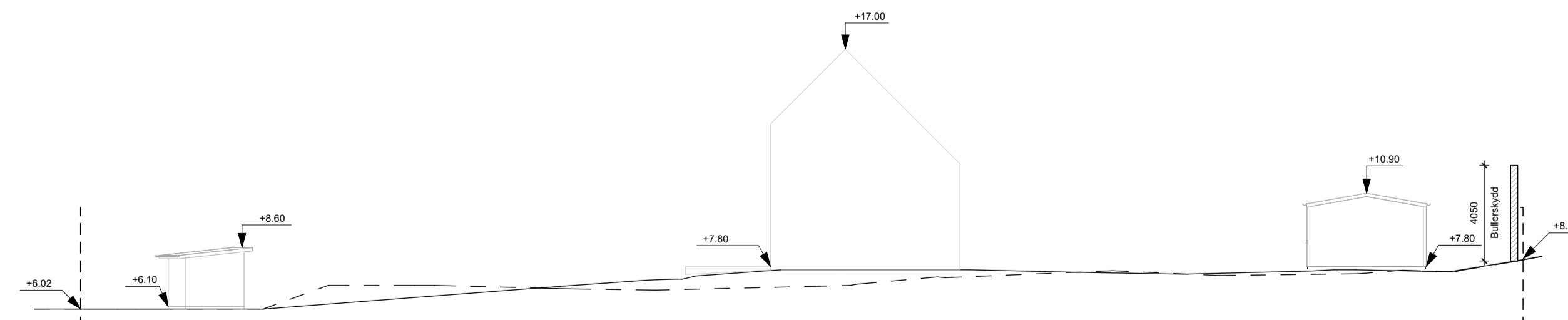
MARKSEKTION 2
1 : 200



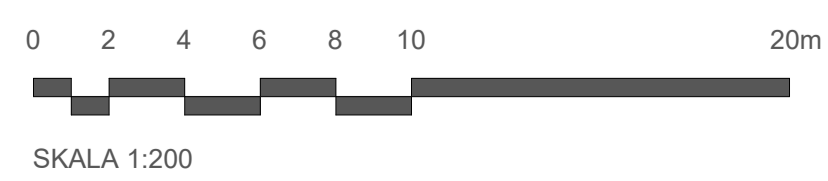
MARKSEKTION 3
1 : 200



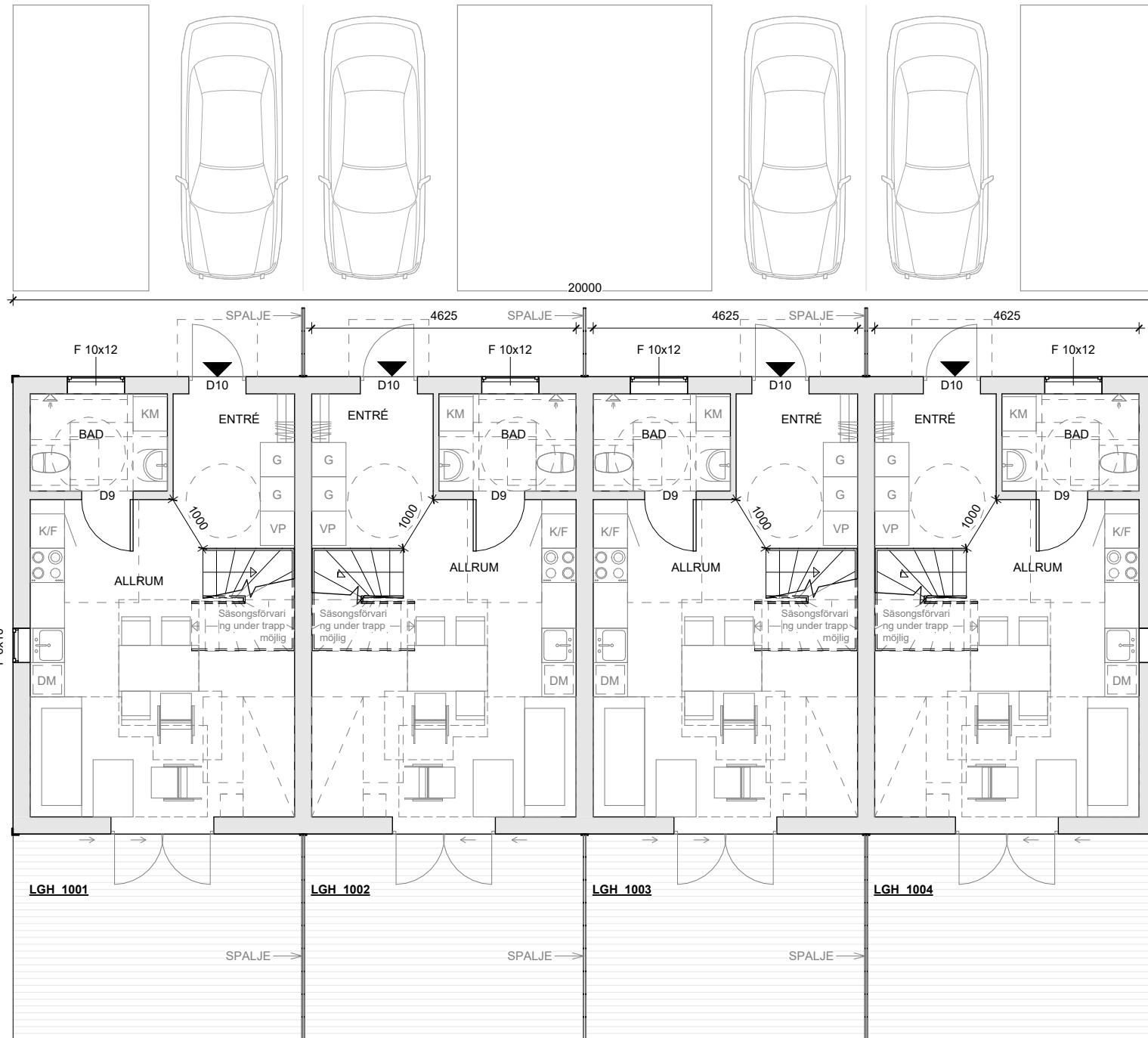
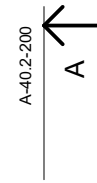
MARKSEKTION 4
1 : 200



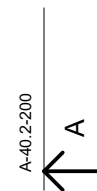
MARKSEKTION 5
1 : 200



HUS 1



0 1 2 3 4 5 10m



SKALA 1:100



HUS 1: BYA: 160.0 m ² BTA: 406.5 m ² BOA: 349.6 m ²	HUS 2: BYA: 160.0 m ² BTA: 406.5 m ² BOA: 349.6 m ²	HUS 3: BYA: 160.0 m ² BTA: 406.5 m ² BOA: 349.6 m ²
LGH 1001: BOA: 87.4 m ²	LGH 2001: BOA: 87.4 m ²	LGH 3001: BOA: 87.4 m ²
LGH 1002: BOA: 87.4 m ²	LGH 2002: BOA: 87.4 m ²	LGH 3002: BOA: 87.4 m ²
LGH 1003: BOA: 87.4 m ²	LGH 2003: BOA: 87.4 m ²	LGH 3003: BOA: 87.4 m ²
LGH 1004: BOA: 87.4 m ²	LGH 2004: BOA: 87.4 m ²	LGH 3004: BOA: 87.4 m ²
FÖRRÅD: BYA: 79.6 m ²		
BASTU: BYA: 10.5 m ²		
ATALJE: BYA: 40.0 m ²		
MILJÖRUM: BYA: 30.0 m ²		
GYM: BYA: 30.0 m ²		

TOTAL BYA:
BYA: 670.5 m²

HUS 1



HUS 1: BYA: 160.0 m ² BTA: 406.5 m ² BOA: 349.6 m ²	HUS 2: BYA: 160.0 m ² BTA: 406.5 m ² BOA: 349.6 m ²	HUS 3: BYA: 160.0 m ² BTA: 406.5 m ² BOA: 349.6 m ²
LGH 1001: BOA: 87.4 m ²	LGH 2001: BOA: 87.4 m ²	LGH 3001: BOA: 87.4 m ²
LGH 1002: BOA: 87.4 m ²	LGH 2002: BOA: 87.4 m ²	LGH 3002: BOA: 87.4 m ²
LGH 1003: BOA: 87.4 m ²	LGH 2003: BOA: 87.4 m ²	LGH 3003: BOA: 87.4 m ²
LGH 1004: BOA: 87.4 m ²	LGH 2004: BOA: 87.4 m ²	LGH 3004: BOA: 87.4 m ²
FÖRRÅD: BYA: 79.6 m ²		
BASTU: BYA: 10.5 m ²		
ATALJE: BYA: 40.0 m ²		
MILJÖRUM: BYA: 30.0 m ²		
GYM: BYA: 30.0 m ²		
TOTAL BYA: BYA: 670.5 m ²		

0 1 2 3 4 5 10m

SKALA 1:100

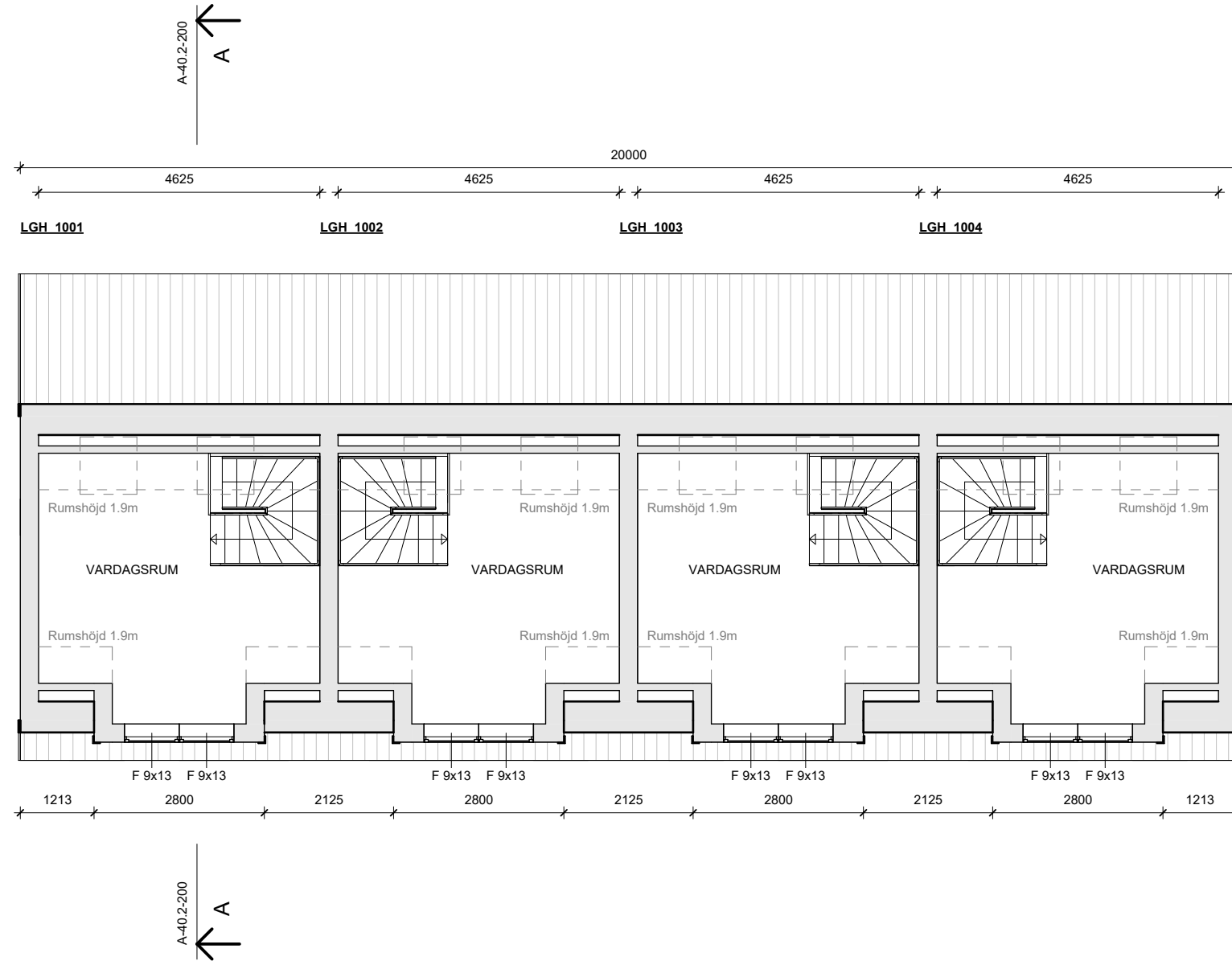


BygglövsExperten



TOTAL BYA:
BYA: 670.5 m²

HUS 1



HUS 1: BYA: 160.0 m ² BTA: 406.5 m ² BOA: 349.6 m ²	HUS 2: BYA: 160.0 m ² BTA: 406.5 m ² BOA: 349.6 m ²	HUS 3: BYA: 160.0 m ² BTA: 406.5 m ² BOA: 349.6 m ²
LGH 1001: BOA: 87.4 m ²	LGH 2001: BOA: 87.4 m ²	LGH 3001: BOA: 87.4 m ²
LGH 1002: BOA: 87.4 m ²	LGH 2002: BOA: 87.4 m ²	LGH 3002: BOA: 87.4 m ²
LGH 1003: BOA: 87.4 m ²	LGH 2003: BOA: 87.4 m ²	LGH 3003: BOA: 87.4 m ²
LGH 1004: BOA: 87.4 m ²	LGH 2004: BOA: 87.4 m ²	LGH 3004: BOA: 87.4 m ²
FÖRRÅD: BYA: 79.6 m ²		
BASTU: BYA: 10.5 m ²		
ATALJE: BYA: 40.0 m ²		
MILJÖRUM: BYA: 30.0 m ²		
GYM: BYA: 30.0 m ²		

0 1 2 3 4 5 10m

SKALA 1:100

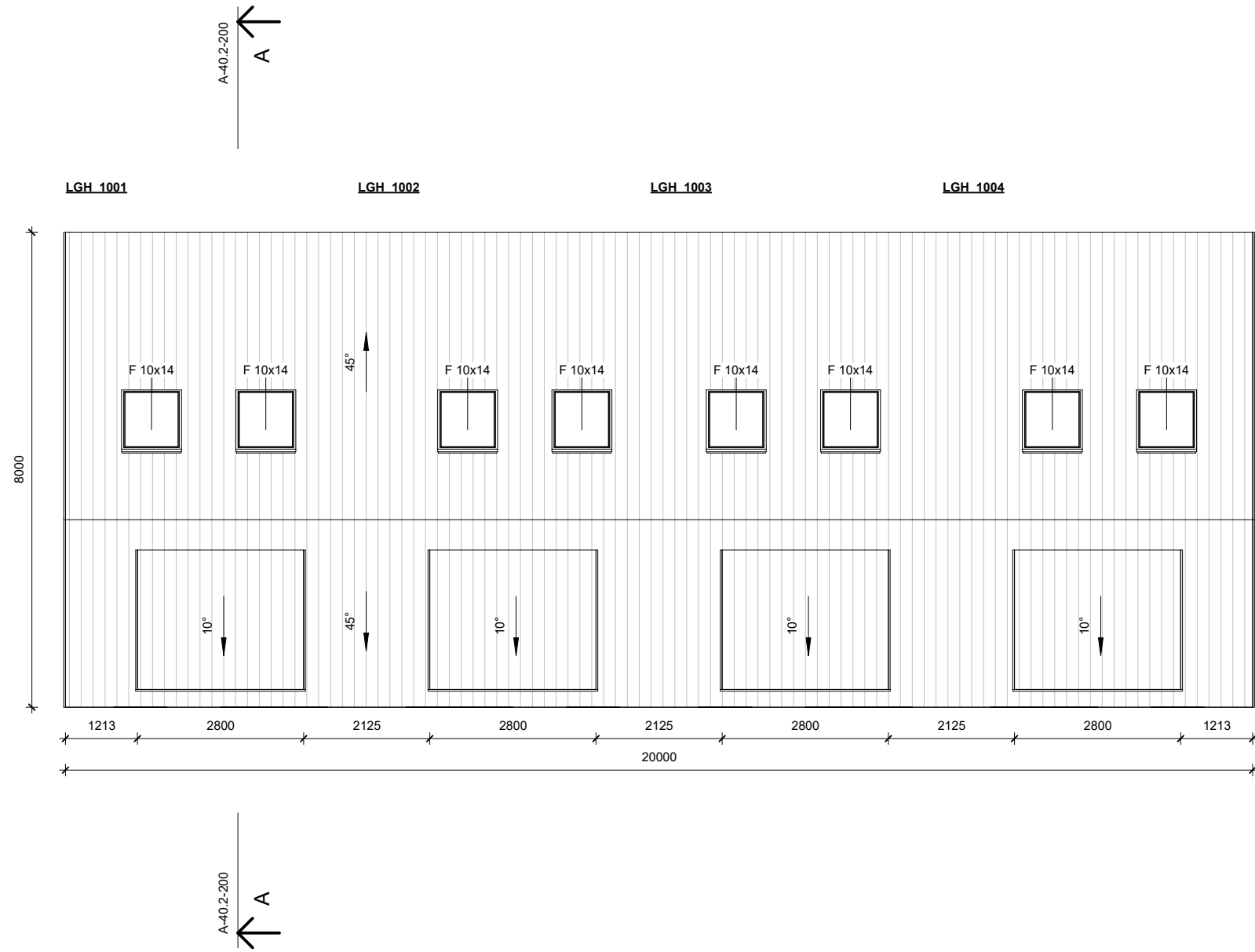


BygglövsExperten



TOTAL BYA:
BYA: 670.5 m²

HUS 1



HUS 1: BYA: 160.0 m ² BTA: 406.5 m ² BOA: 349.6 m ²	HUS 2: BYA: 160.0 m ² BTA: 406.5 m ² BOA: 349.6 m ²	HUS 3: BYA: 160.0 m ² BTA: 406.5 m ² BOA: 349.6 m ²
LGH 1001: BOA: 87.4 m ²	LGH 2001: BOA: 87.4 m ²	LGH 3001: BOA: 87.4 m ²
LGH 1002: BOA: 87.4 m ²	LGH 2002: BOA: 87.4 m ²	LGH 3002: BOA: 87.4 m ²
LGH 1003: BOA: 87.4 m ²	LGH 2003: BOA: 87.4 m ²	LGH 3003: BOA: 87.4 m ²
LGH 1004: BOA: 87.4 m ²	LGH 2004: BOA: 87.4 m ²	LGH 3004: BOA: 87.4 m ²
FÖRRÅD: BYA: 79.6 m ²		
BASTU: BYA: 10.5 m ²		
ATALJE: BYA: 40.0 m ²		
MILJÖRUM: BYA: 30.0 m ²		
GYM: BYA: 30.0 m ²		
TOTAL BYA: BYA: 670.5 m ²		

0 1 2 3 4 5 10m

SKALA 1:100

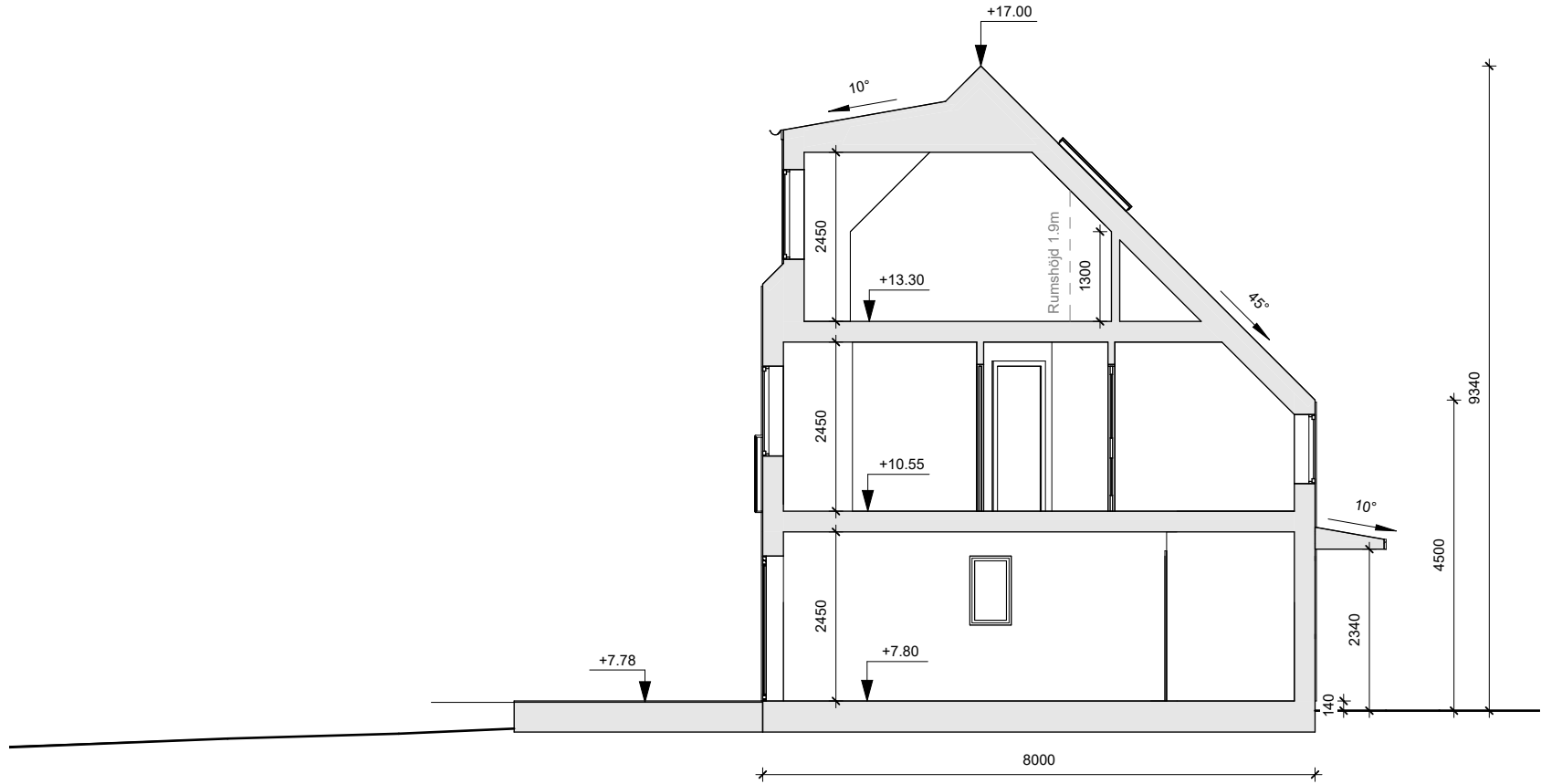


BygglövsExperten



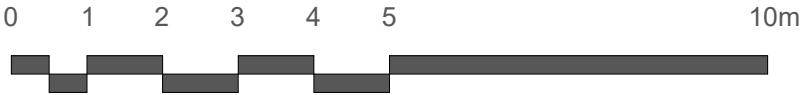
TOTAL BYA:
BYA: 670.5 m²

HUS 1



SEKTION A-A
1 : 100

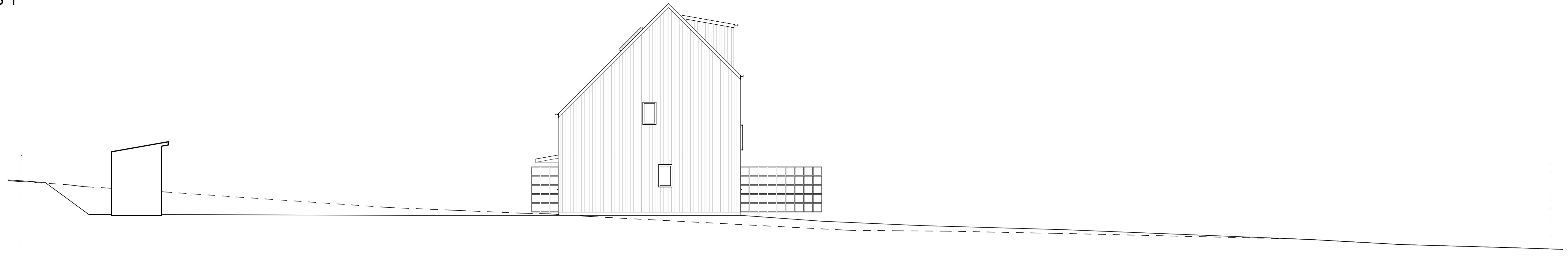
Fasad Material: Träpanel, Roslagsmahogny
Tak Material: Plåttak NCS S 9000-N
Fönster/Dörr Material: Trä NCS S 0500-N



SKALA 1:100

TG — — — Befintlig Mark
| — — — Föreslagen Mark

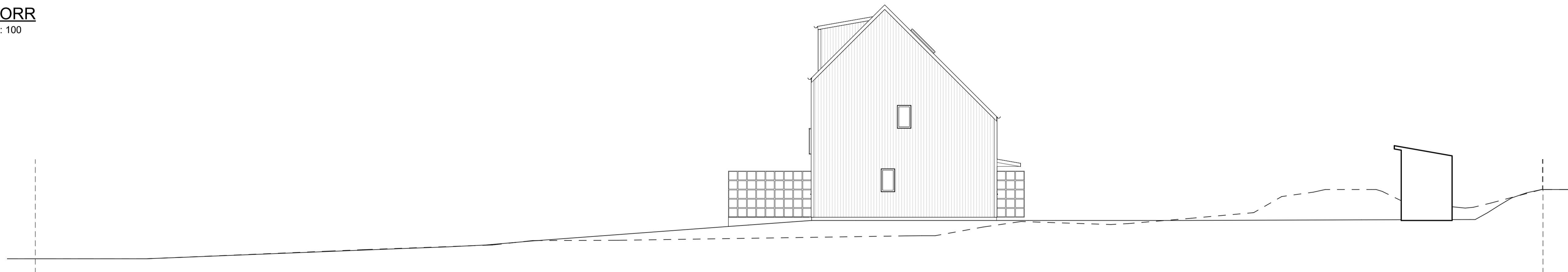
HUS 1



VÄST
1:100



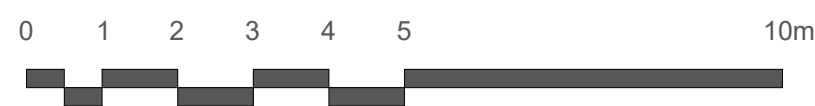
NORR
1:100



ÖST
1:100



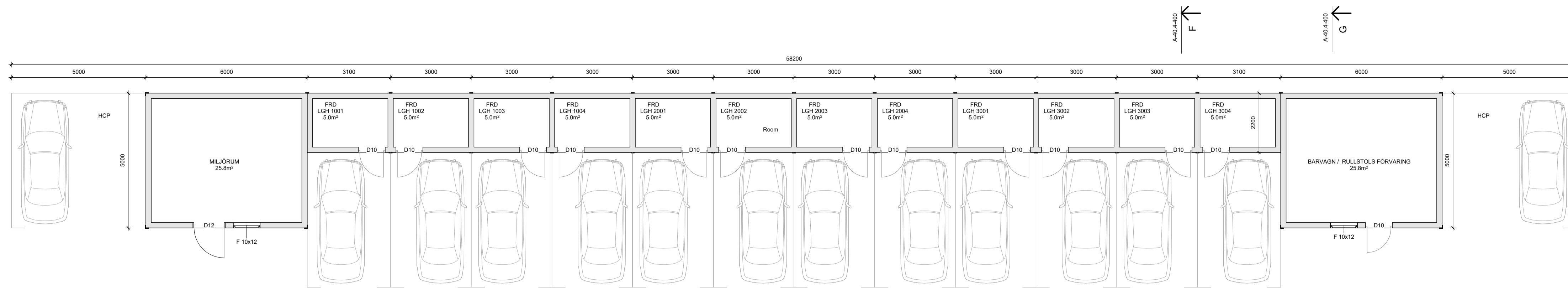
SÖDER
1:100



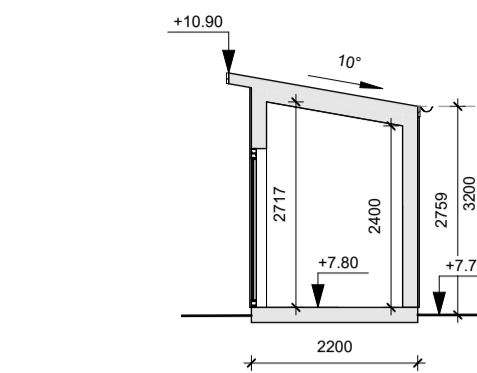
SKALA 1:100

Fasad Material: Träpanel, Roslagsmahogny
 Tak Material: Plättak NCS S 9000-N
 Fönster/Dörr Material: Trä NCS S 0500-N

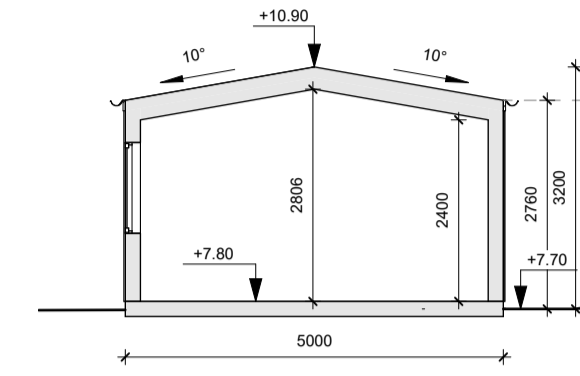
TG - - - Befintlig Mark
 | Föreslagen Mark



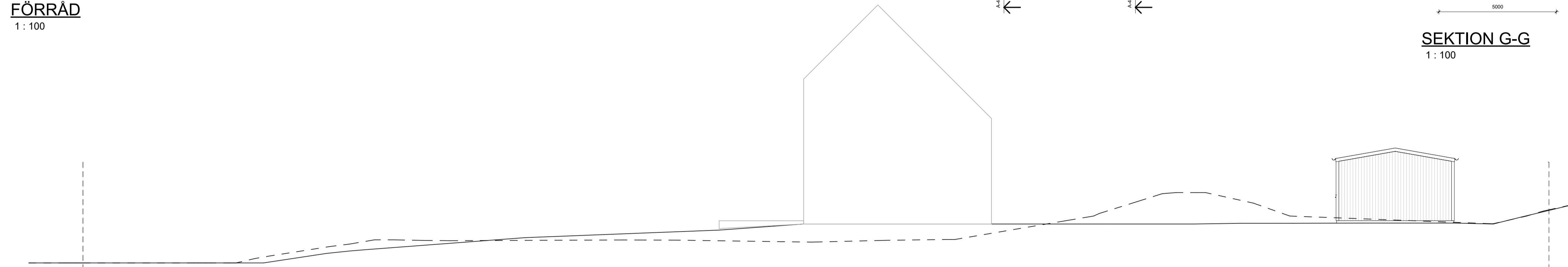
FÖRRÅD
1 : 100



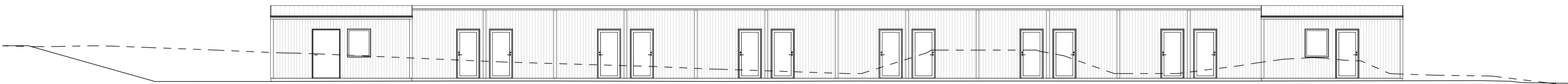
SEKTION F-F
1 : 100



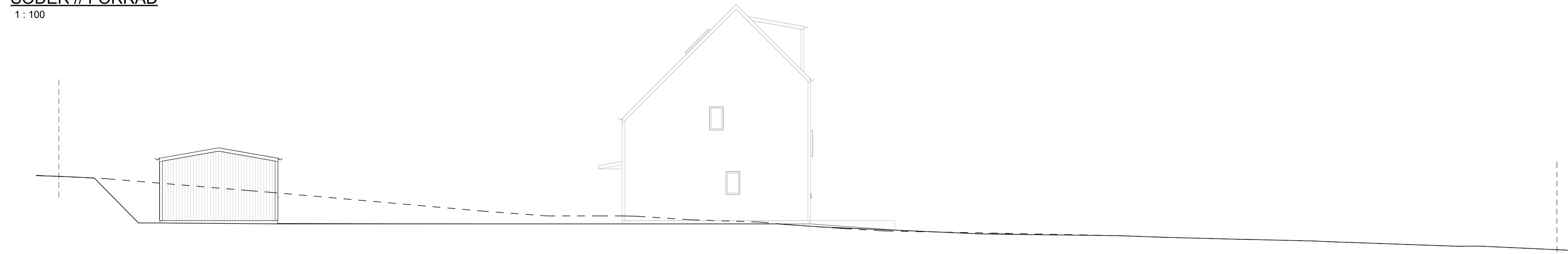
SEKTION G-G
1 : 100



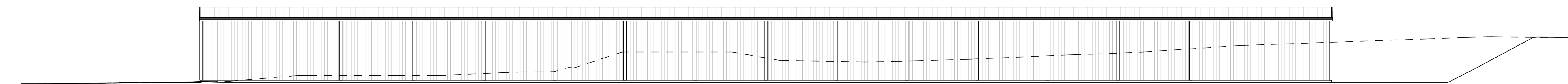
ÖST // FÖRRÅD
1 : 100



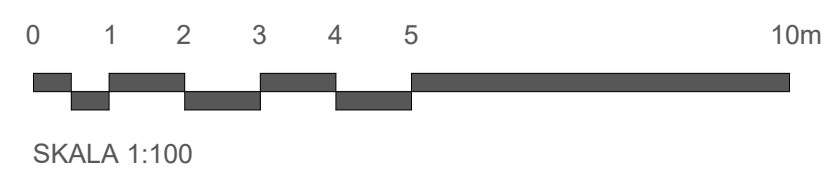
SÖDER // FÖRRÅD
1 : 100



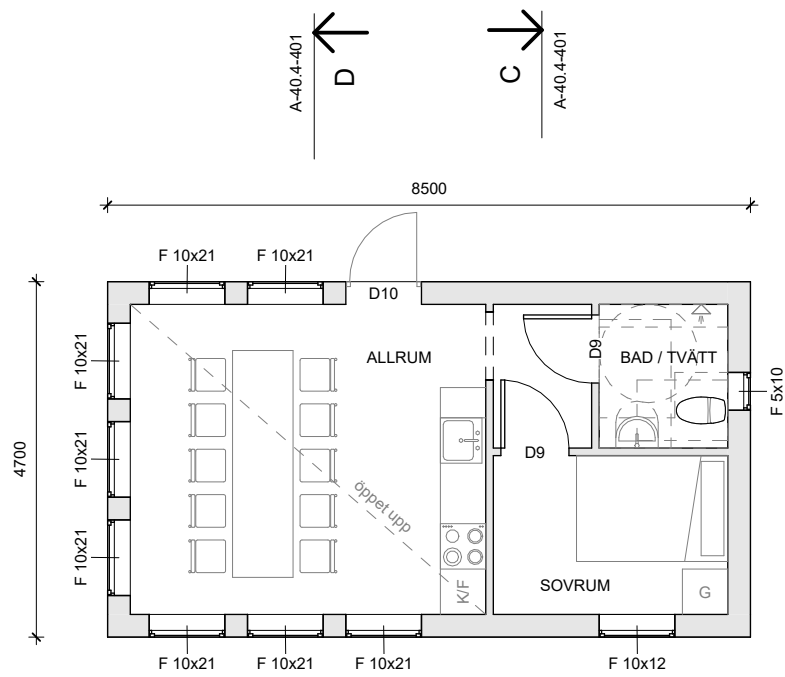
VÄST // FÖRRÅD
1 : 100



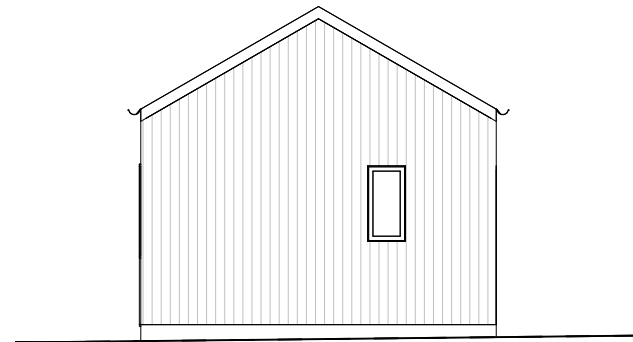
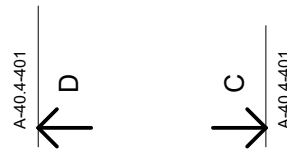
NORR // FÖRRÅD
1 : 100



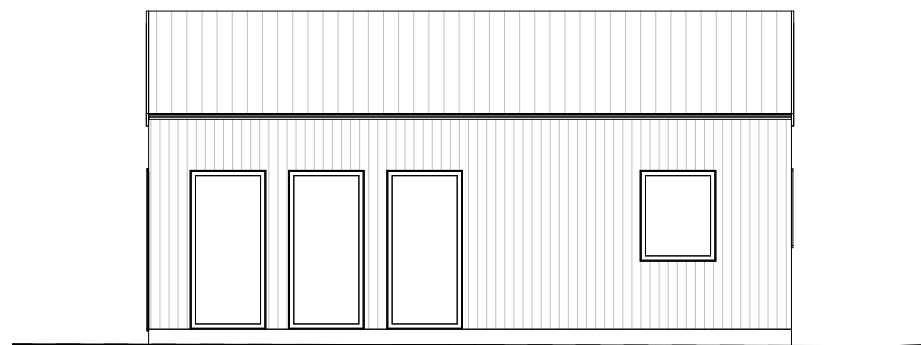
Fasad Material: Tråpanel, S 5040-Y70R (Faluröd)
Tak Material: Plåttak NCS S 9000-N
Fönster/Dörr Material: Trå NCS S 0500-N



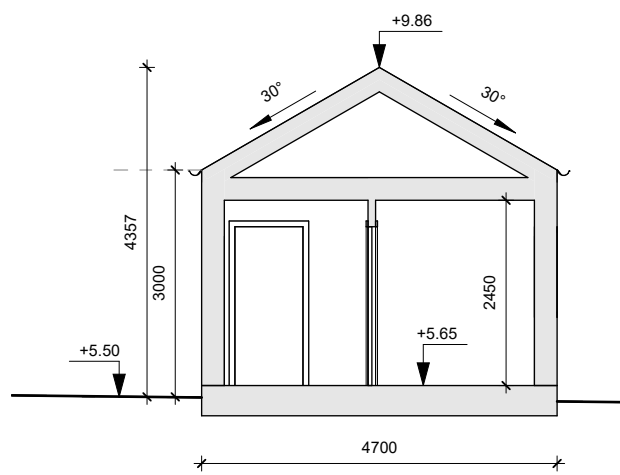
ATELJE
1 : 100



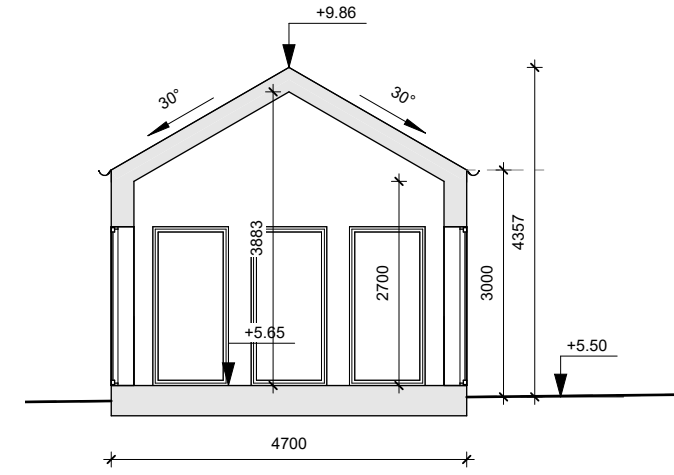
ÖST // ATELJE
1 : 100



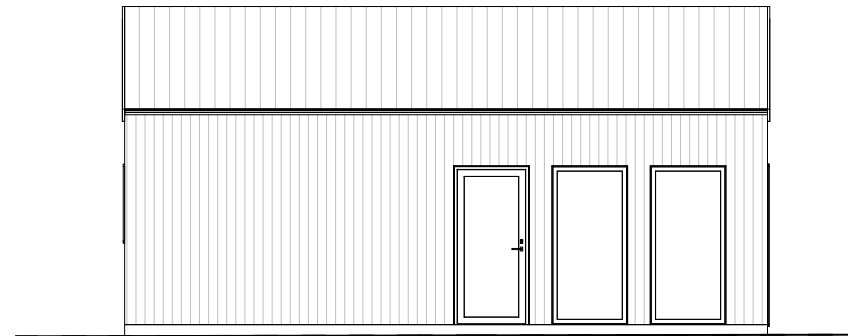
SÖDER // ATELJE
1 : 100



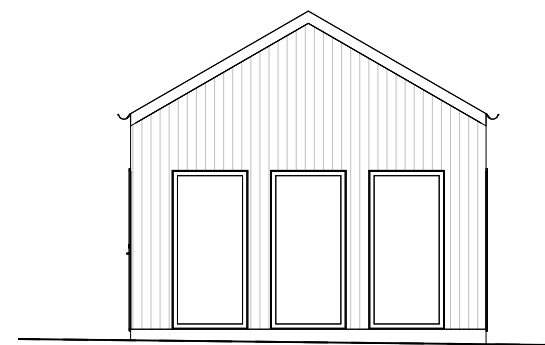
SEKTION C-C
1 : 100



SEKTION D-D
1 : 100



NORR // ATELJE
1 : 100



VÄST // ATELJE
1 : 100

0 1 2 3 4 5 10m



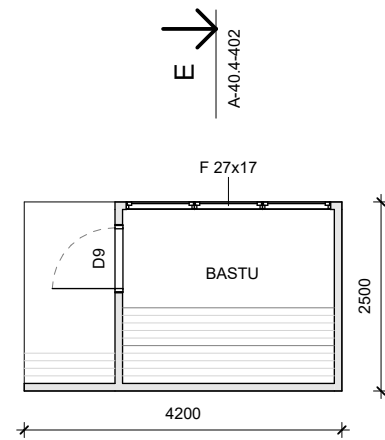
SKALA 1:100



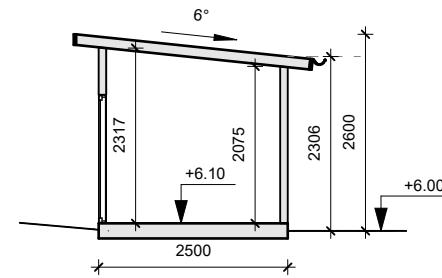
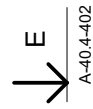
Fasad Material: Träpanel, S 5040-Y70R (Faluröd)

Tak Material: Plåttak NCS S 9000-N

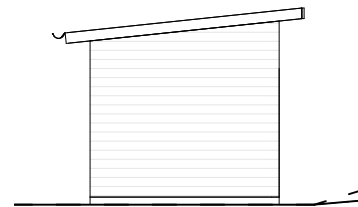
Fönster/Dörr Material: Trä NCS S 0500-N



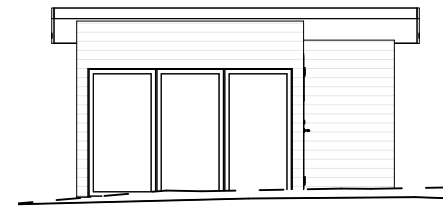
BASTU
1 : 100



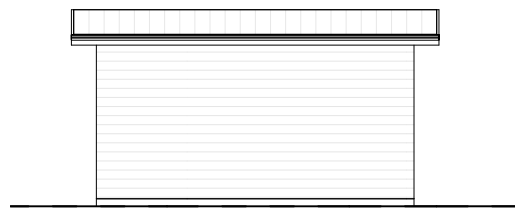
SEKTION E-E
1 : 100



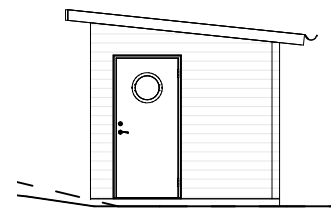
ÖST // BASTU
1 : 100



NORR // BASTU
1 : 100



SÖDER // BASTU
1 : 100



VÄST // BASTU
1 : 100

0 1 2 3 4 5 10m

SKALA 1:100



Fasad Material: Träpanel, Roslagsmahogny

Tak Material: Papptak NCS S 9000-N

Fönster/Dörr Material: Trä NCS S 0500-N



BygglovsExperten

FÖRKLARINGAR:

ALLA MÅTT ÄR I MILLIMETER.
HÖJDER I METER.

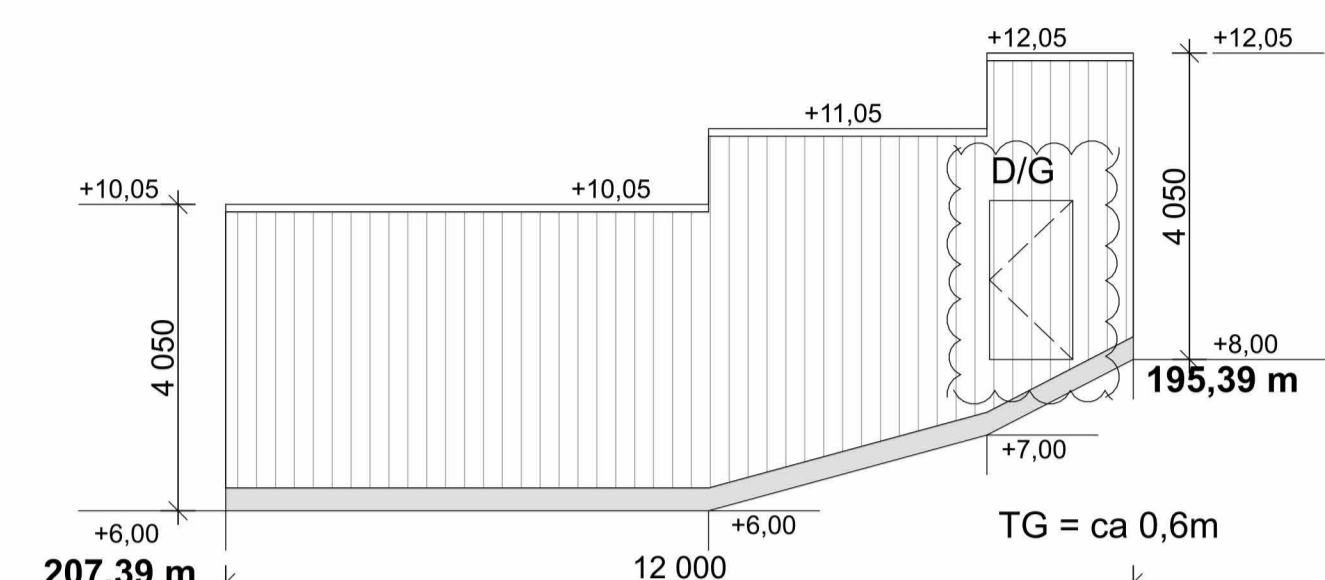
- +10,00 PROJEKTERADE HÖJDER
- +00,00 BEFINTLIGA HÖJDER
- 00 m STARTPUNKT - BULLERPLANK
- 13,40 m BULLERPLANK - LÖPANDE METER
- D/G DÖRR/GRIND I BULLERPLANK
- TG TOMTGRÄNS (AVSTÅND FRÅN)

HÄNVISNINGAR

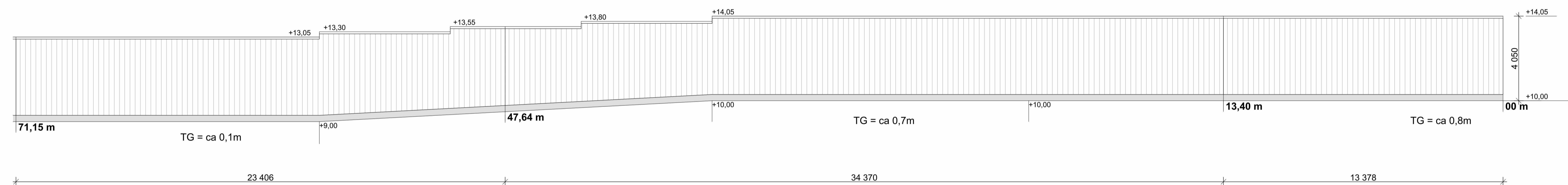
PLANVY SE RITN. A-01.1-102 SITUATIONSPLAN
DETALJ SE ROTN. A-49.1-101



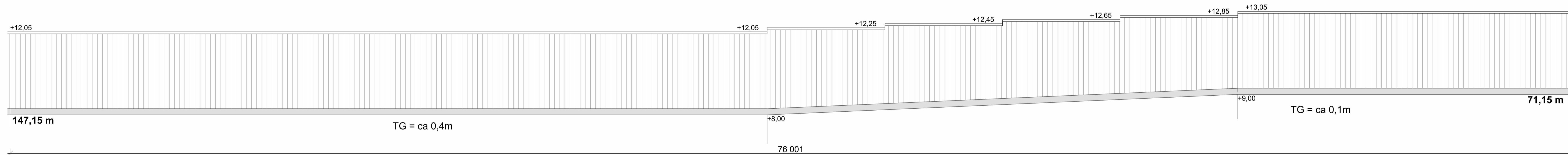
FASAD MOT ÖST
PUNKT 0 TILL PUNKT -25,5



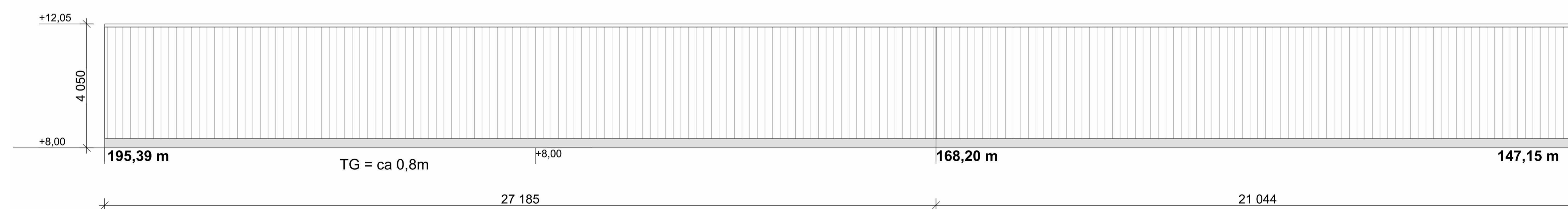
FASAD MOT VÄST
PUNKT 195,39 TILL PUNKT 207,39



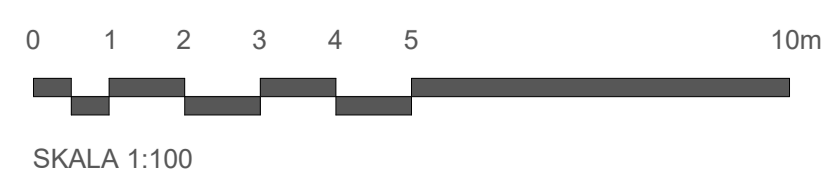
FASAD MOT NORR
PUNKT 0 TILL PUNKT 71,15

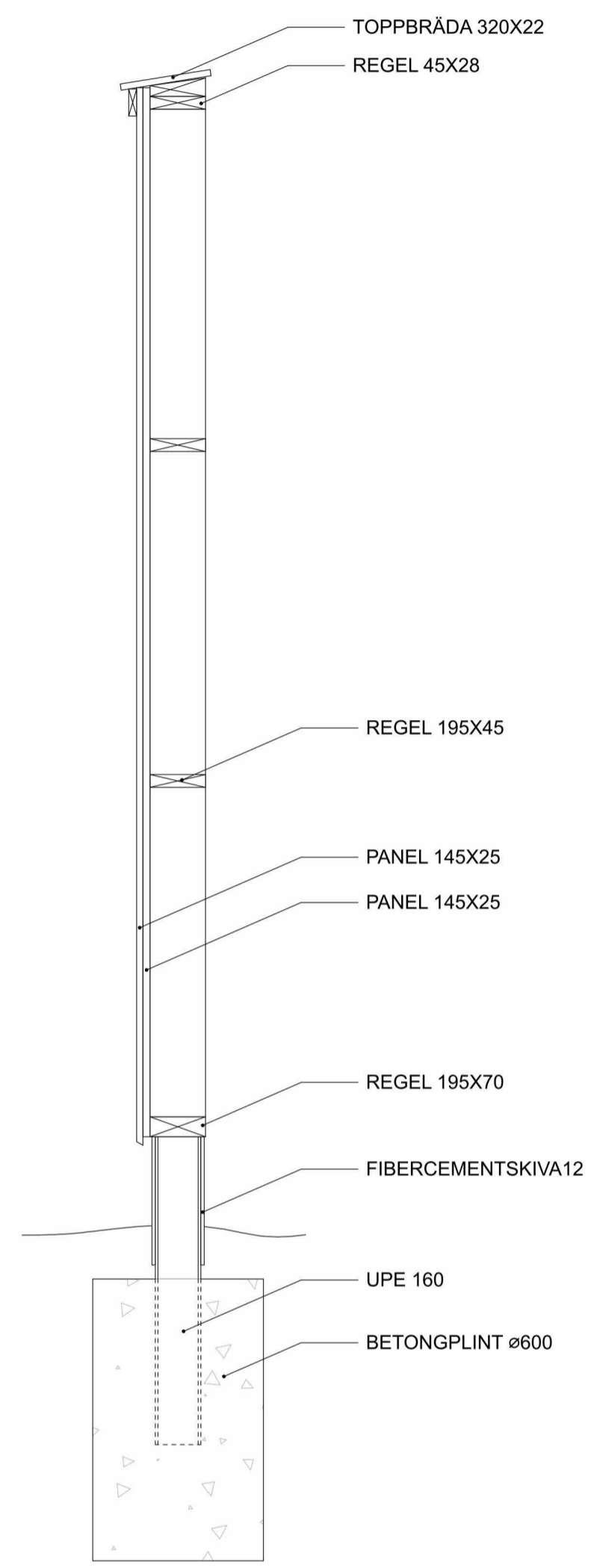


FASAD MOT NORR
PUNKT 71,15 TILL PUNKT 147,15

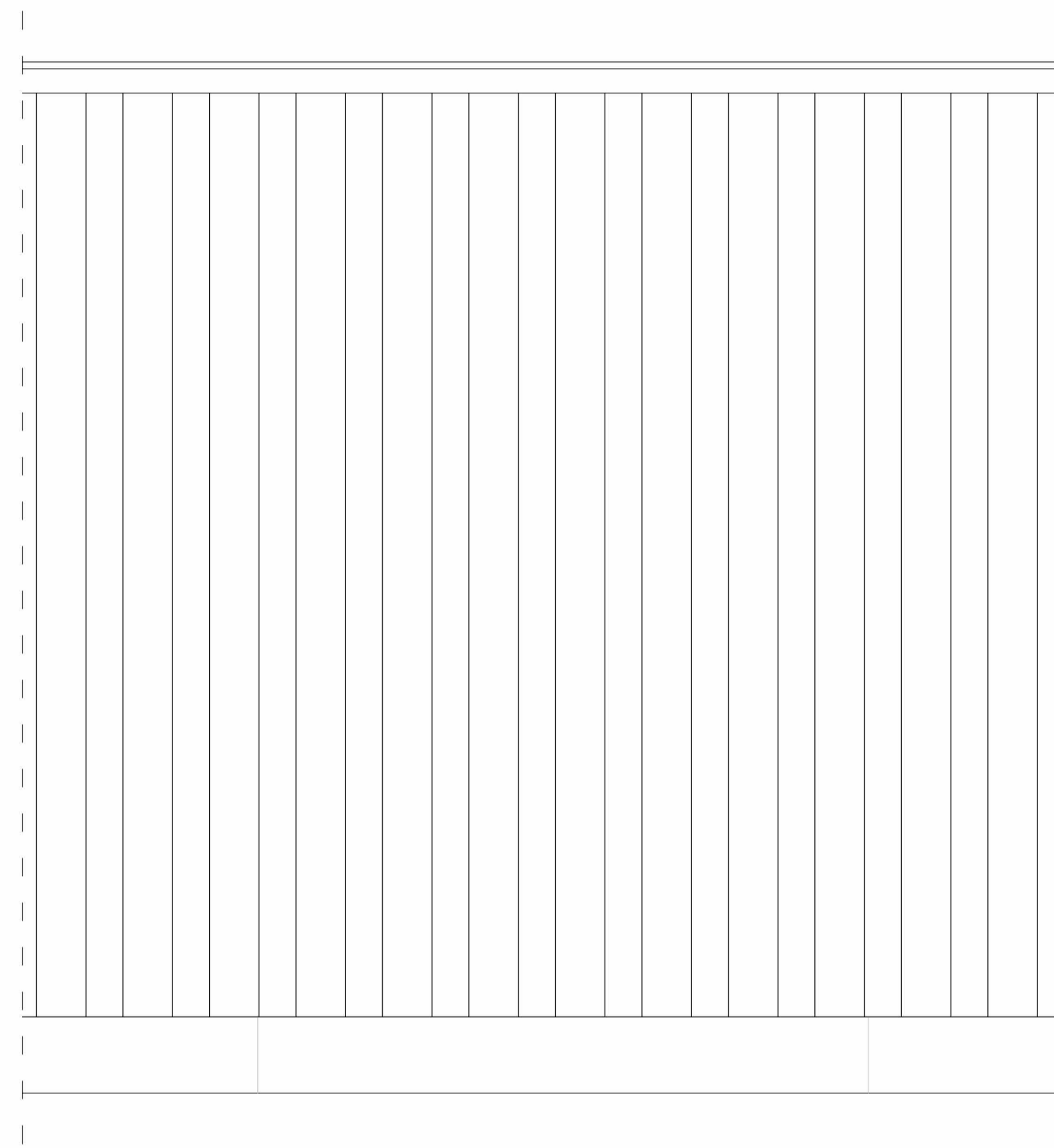
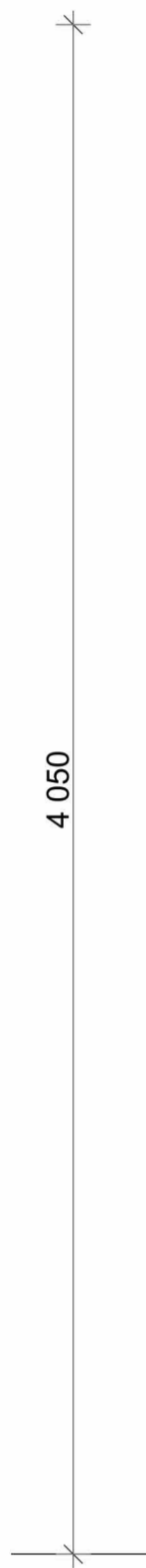


FASAD MOT NORR
PUNKT 147,15 TILL PUNKT 195,39

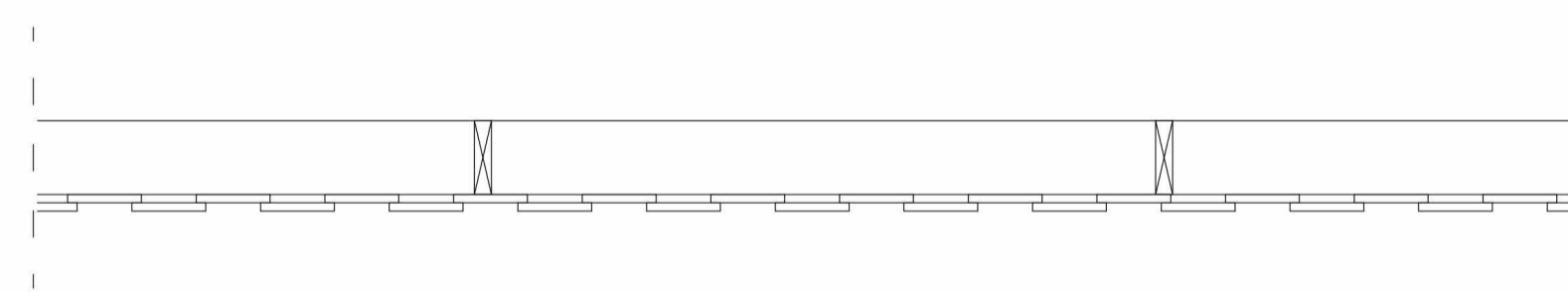




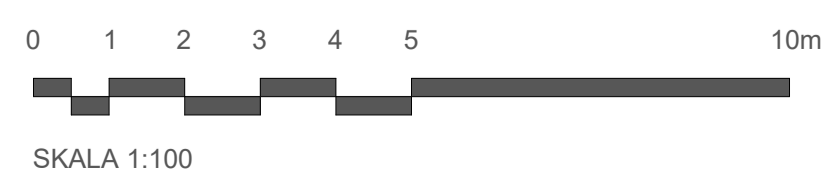
TYPSEKTION



TYPELEVATION MOT SALTSJÖBANAN



PLANSNITT



SKALA 1:100