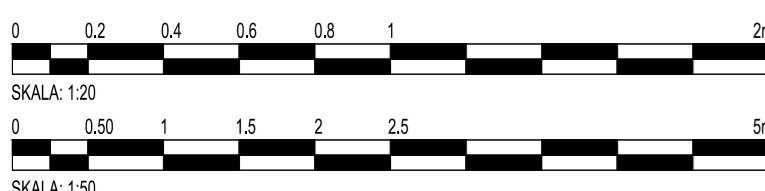
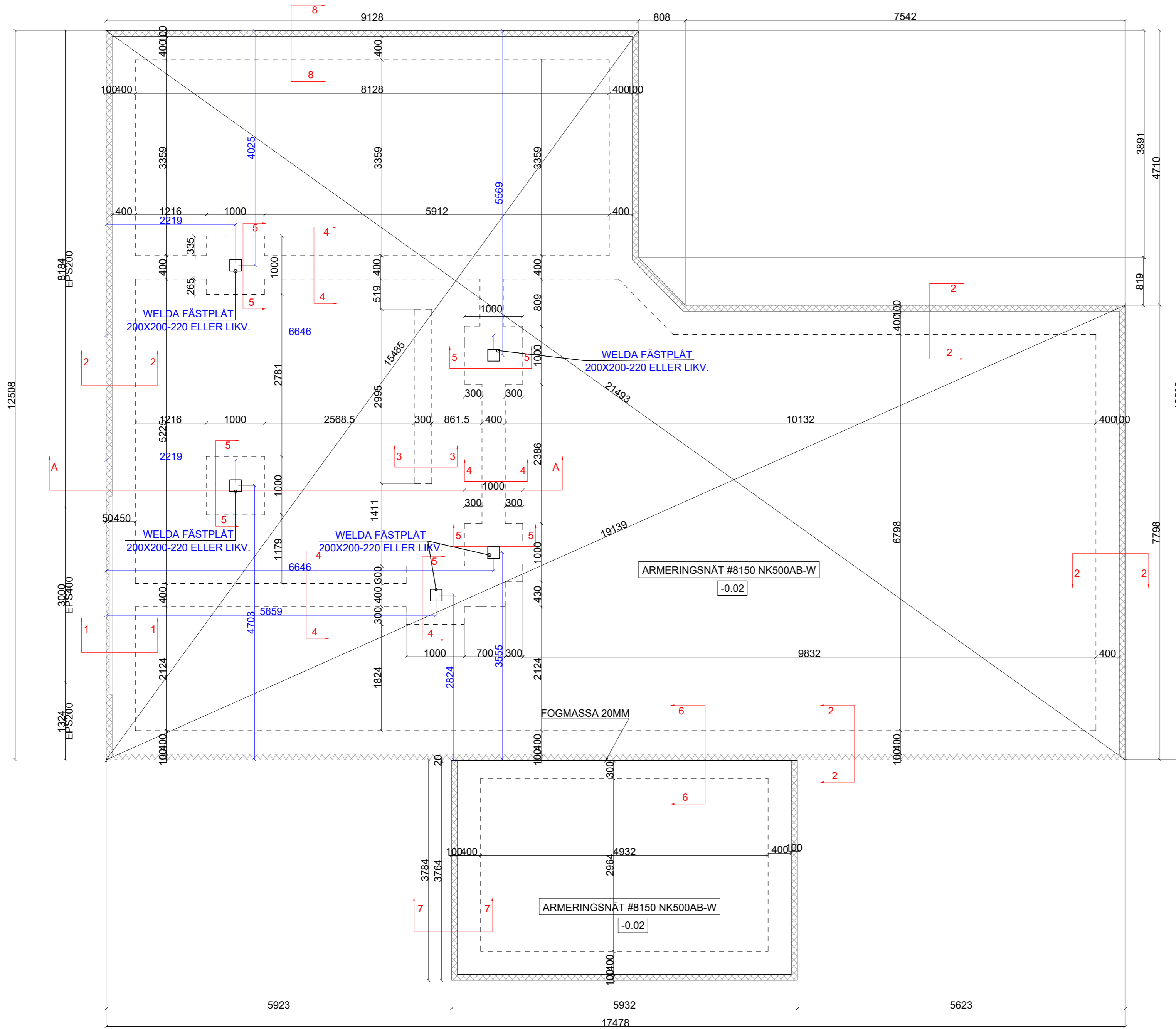
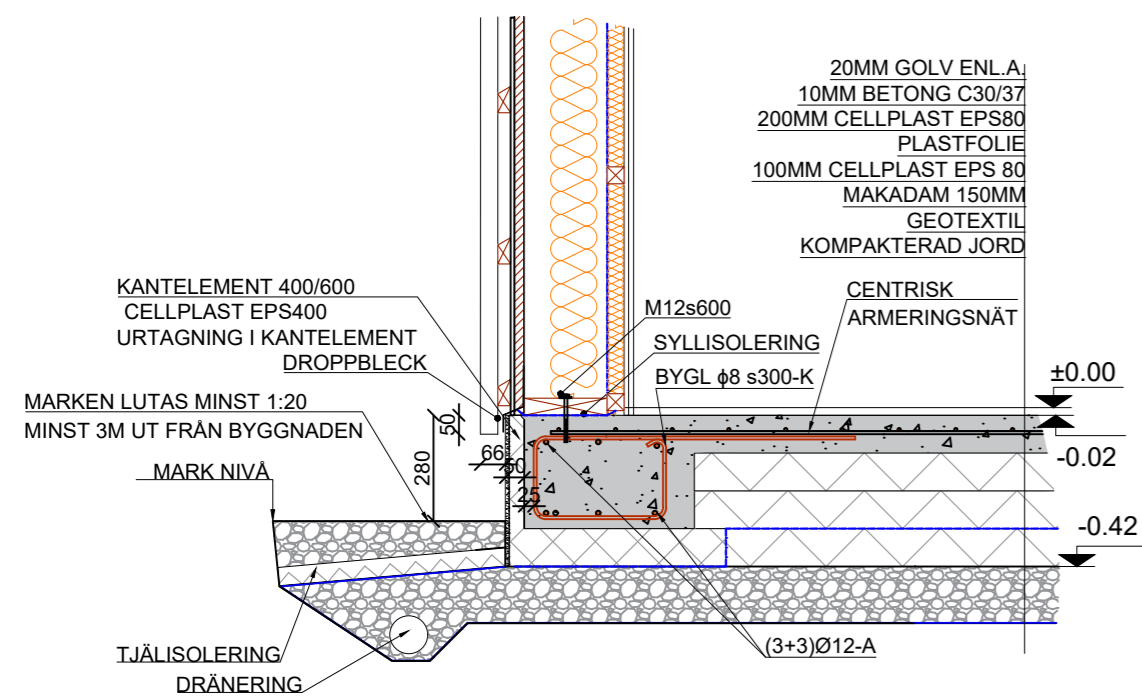


ENSLÖVS-NORTORP 1:9

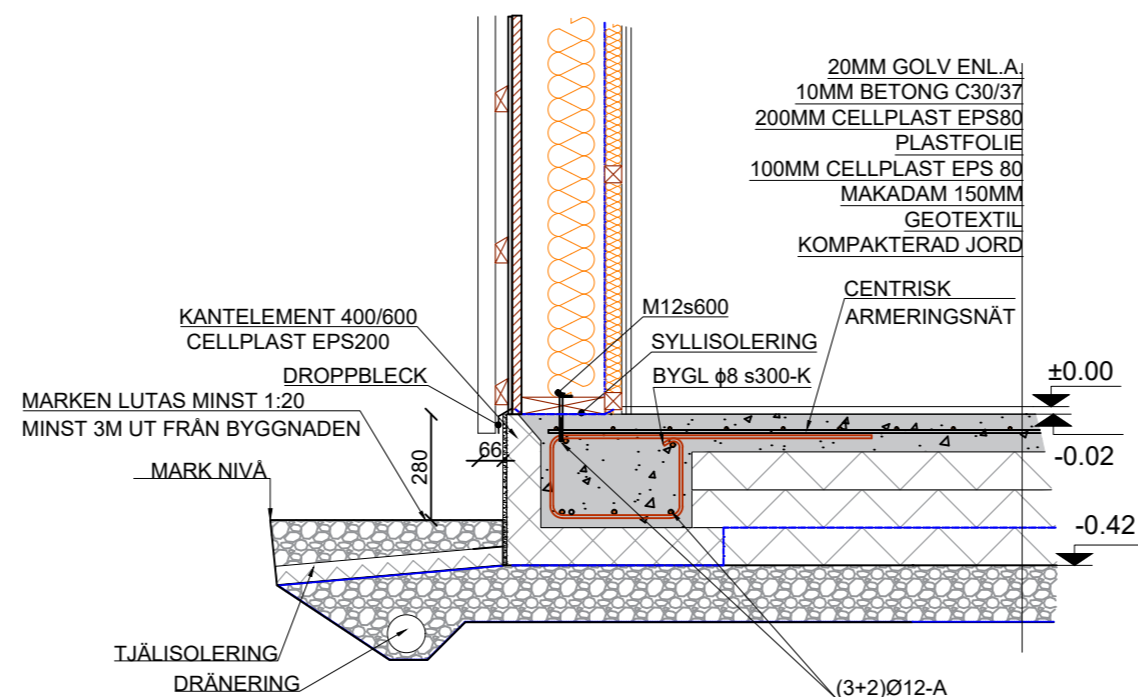
NYBYGGNATION



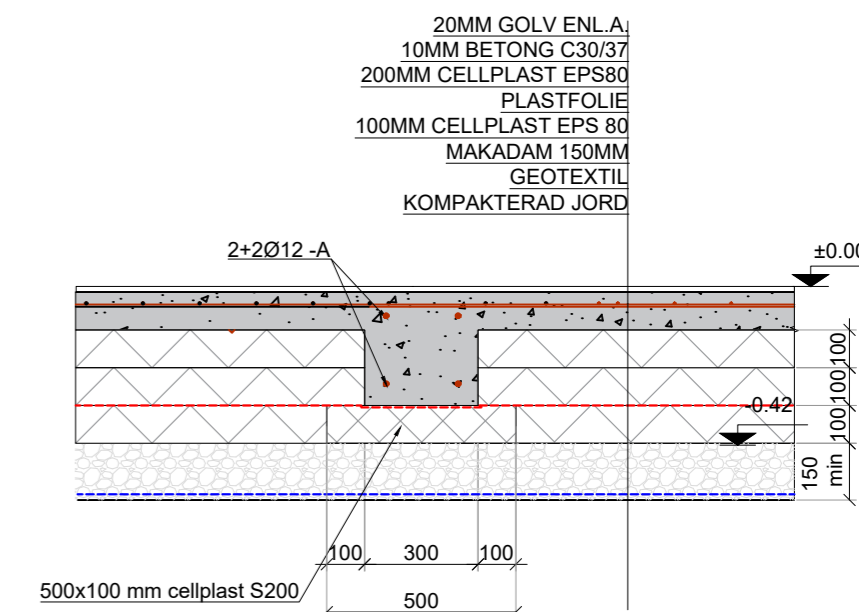
RITNING GRUNDPLAN		RITNINGSNUMMER K01	
RITAD/KONST.AV	DATUM	SKALA	1:50 1:20



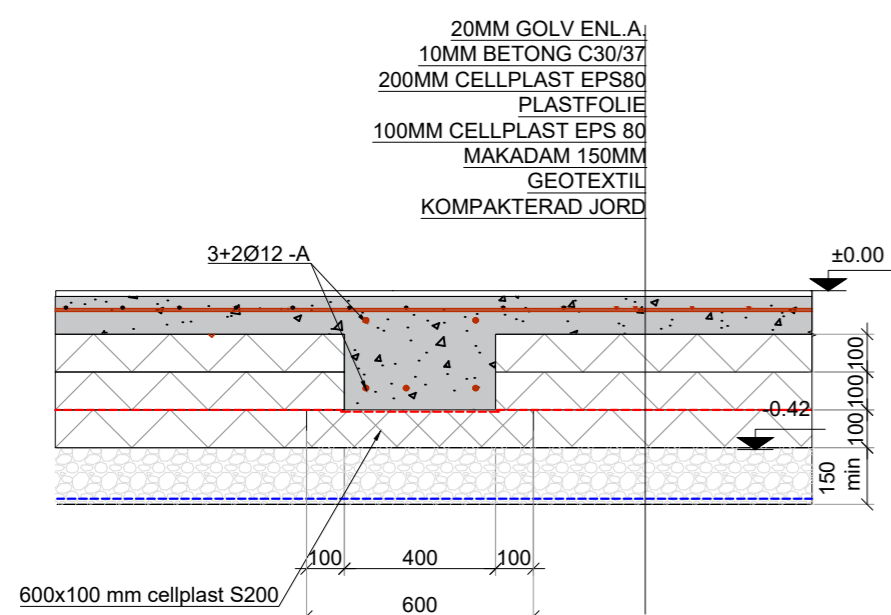
Sektion 1-1
1:20



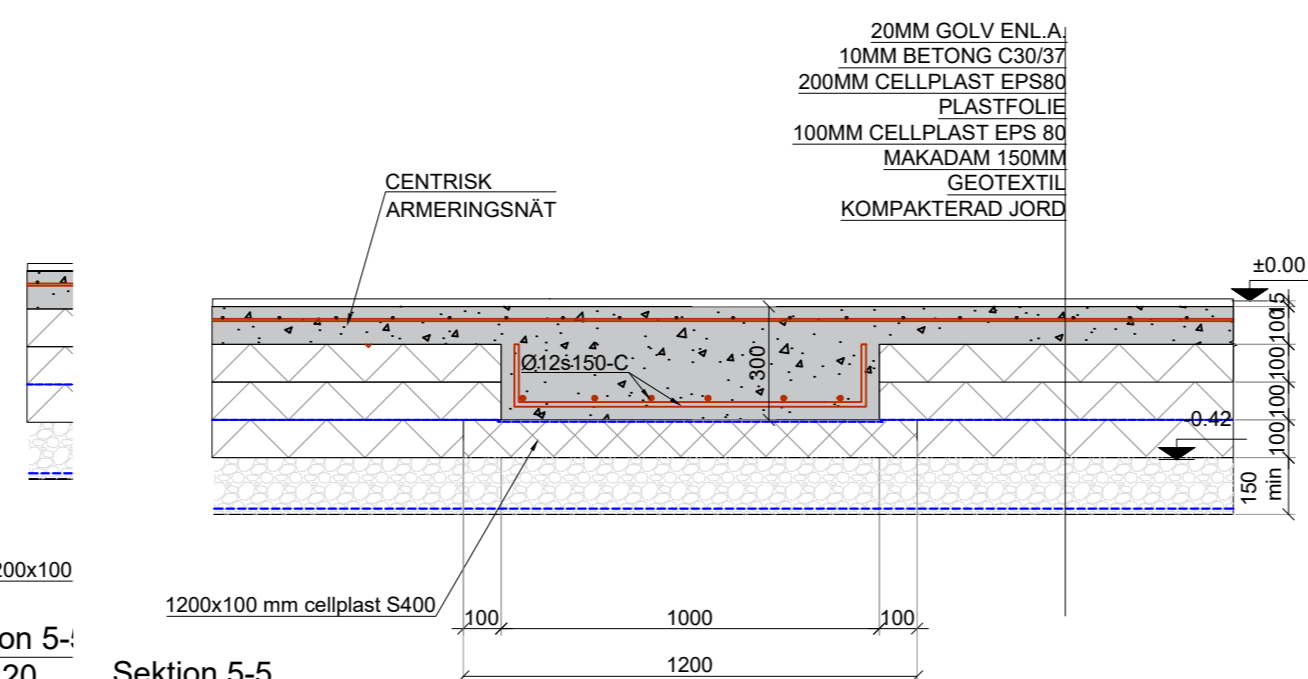
Sektion 2-2
1:20



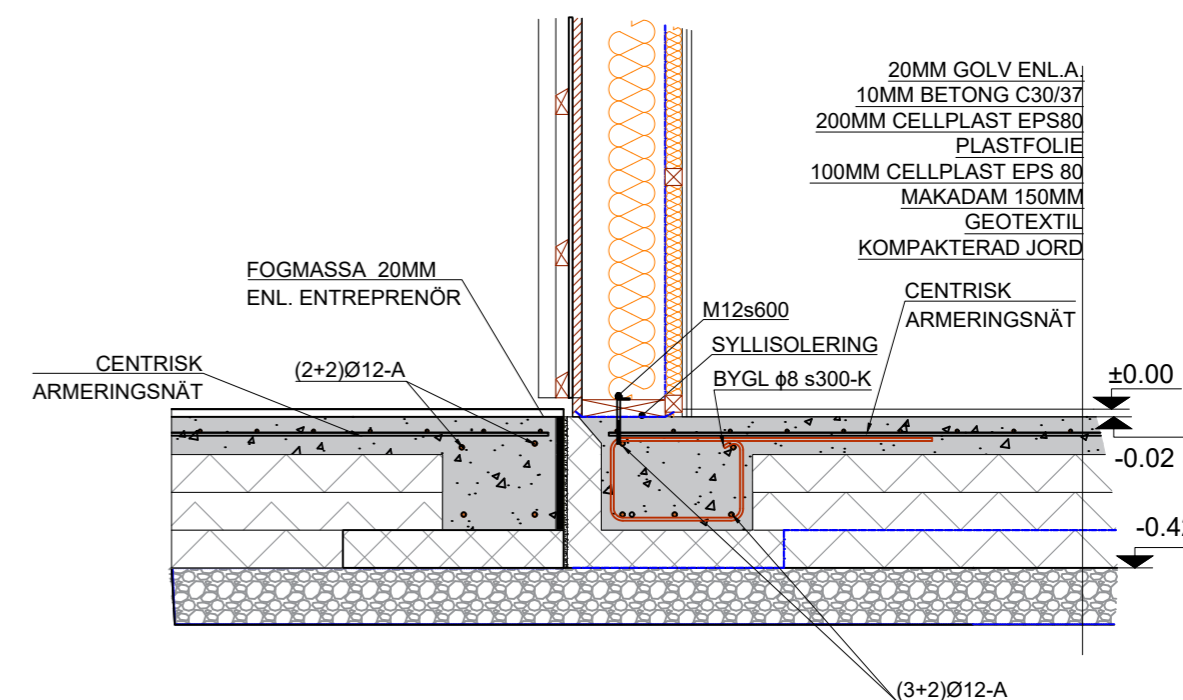
Sektion 3-3
1:20



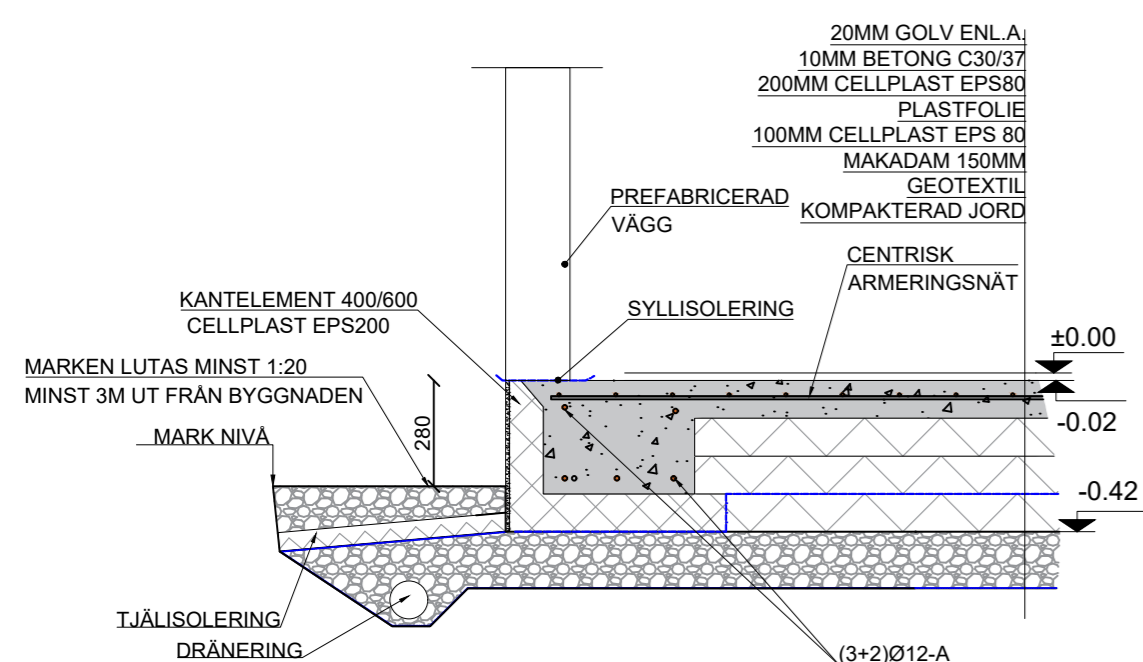
Sektion 4-4
1:20



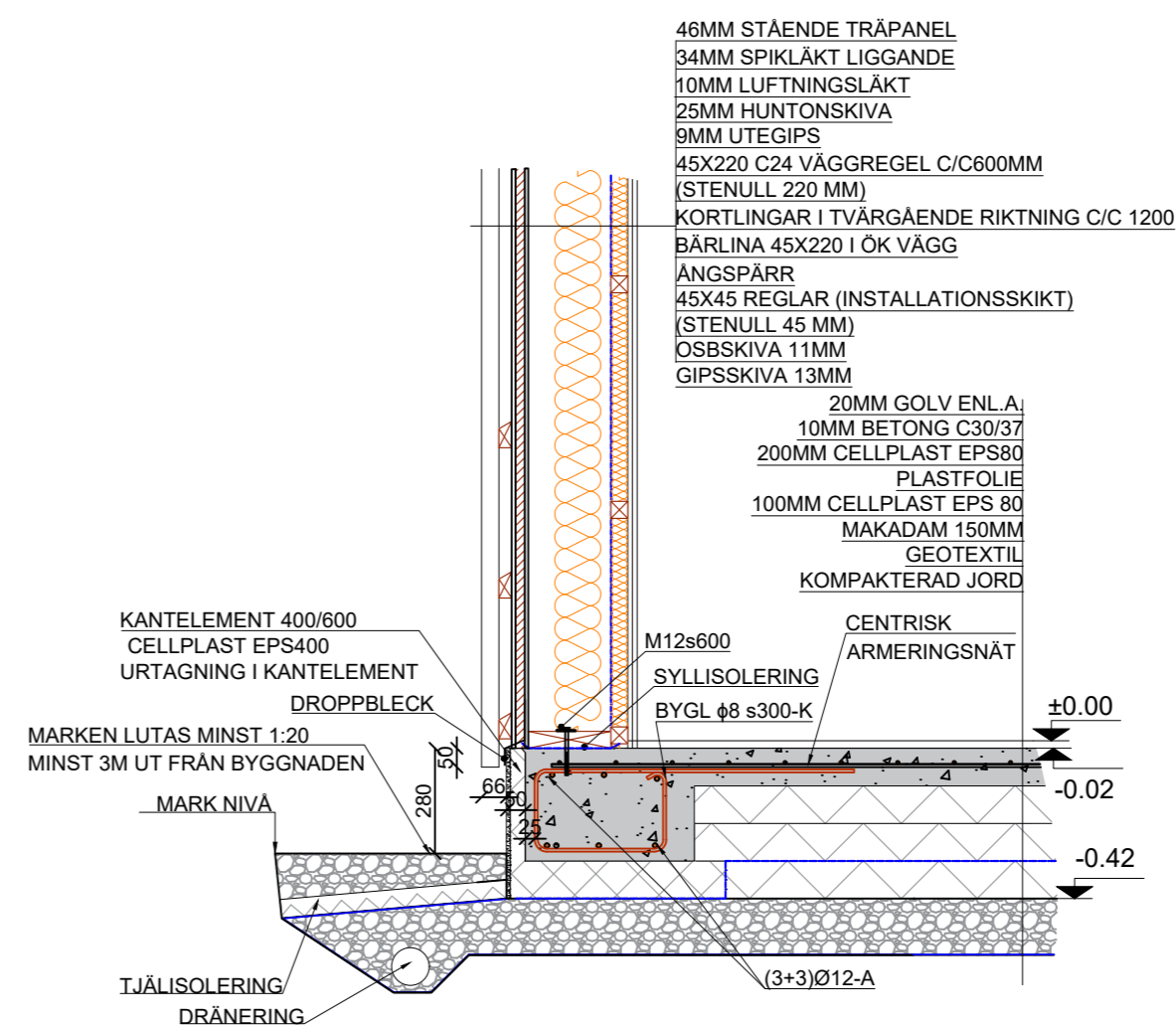
Sektion 5-5
1:20



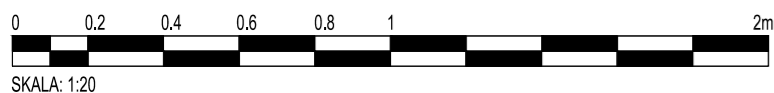
Sektion 6-6
1:20



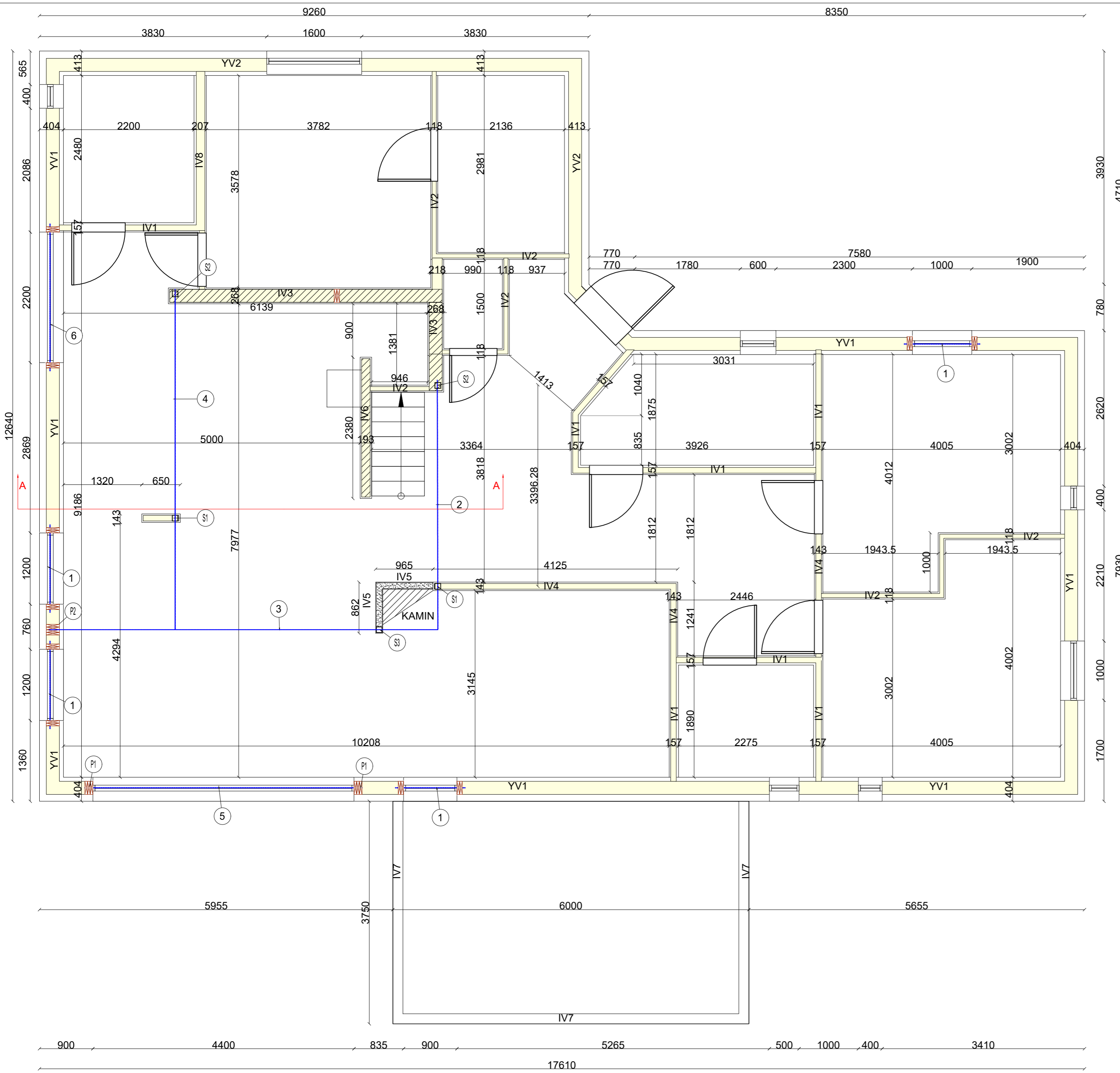
Sektion 7-7
1:20



Sektion 8-8
1:20



RITNING GRUNDDETALJER		RITNINGNUMMER K02	
RITAD/KONST.AV	DATUM	SKALA	1:20



FÖRKLARINGAR

- ① 2X45X220 C24 IHOPSPIKADE
- ② IPE 240 S355 ENL.K09
- ③ IPE 360 S355 ENL.K09
- ④ IPE 240 S355 ENL.K09
- ⑤ IPE 270 S355 L=4700MM
- ⑥ LIMTRÄBALK . DIMENSIONERAS SEPARAT AV TAKSTOLLSTILLVERKAREN
- S1 VKR 100X100X5 S355 ENL.K09
- S2 VKR 100X100X5 S355 ENL.K09
- S3 VKR 100X100X5 S355 ENL.K09
- P1 3X45X220 C24 IHOPSPIKADE
- P2 4X45X220 C24 IHOPSPIKADE

YV1 YTTERVÄGG - BÄRANDE:

- 46MM STÄNDE TRÄPANEL
- 34MM SPIKLÄKT LIGGANDE
- 10MM LUFTNINGSLÄKT
- 25MM HUNTONSKIVA
- 45X220 C24 VÄGGREGEL C/C600MM
- (STENULL 220 MM)
- KORTLINGAR I TVÄRGÄNDE RIKTNING C/C 1200
- BÄRLINA 45X220 I ÖK VÄGG
- ÅNGSPÄRR
- 45X45 REGLAR (INSTALLATIONSSKIKT)
- (STENULL 45 MM)
- OSBSKIVA 11MM
- GIPSSKIVA 13MM

YV2 YTTERVÄGG - BÄRANDE:

- 46MM STÄNDE TRÄPANEL
- 34MM SPIKLÄKT LIGGANDE
- 10MM LUFTNINGSLÄKT
- 25MM HUNTONSKIVA
- 9MM UTEGIPS
- 45X220 C24 VÄGGREGEL C/C600MM
- (STENULL 220 MM)
- KORTLINGAR I TVÄRGÄNDE RIKTNING C/C 1200
- BÄRLINA 45X220 I ÖK VÄGG
- ÅNGSPÄRR
- 45X45 REGLAR (INSTALLATIONSSKIKT)
- (STENULL 45 MM)
- OSBSKIVA 11MM
- GIPSSKIVA 13MM

IV1 INNERVÄGG -ICKE-BÄRANDE (157MM)

- GIPSSKIVA 13MM
- OSBSKIVA 11MM
- 45X95 C24 VÄGGREGEL C/C300MM
- PLYFA 15MM
- VÄTRUMSSKIVA 13MM
- YTSKIKT ENL. A. 10MM

IV8 INNERVÄGG -ICKE-BÄRANDE (157MM)

- GIPSSKIVA 13MM
- OSBSKIVA 11MM
- 45X145 C24 VÄGGREGEL C/C300MM
- PLYFA 15MM
- VÄTRUMSSKIVA 13MM
- YTSKIKT ENL. A. 10MM

IV2 INNERVÄGG -ICKE-BÄRANDE (118MM)

- GIPSSKIVA 13MM
- OSBSKIVA 11MM
- 45X70 C24 VÄGGREGEL C/C600MM
- OSBSKIVA 11MM
- GIPSSKIVA 13MM

IV3 INNERVÄGG -BÄRANDE (268MM)

- GIPSSKIVA 13MM
- OSBSKIVA 11MM
- 45X220 C24 VÄGGREGEL C/C600MM
- OSBSKIVA 11MM
- GIPSSKIVA 13MM

IV4 INNERVÄGG -ICKE-BÄRANDE (143MM)

- GIPSSKIVA 13MM
- OSBSKIVA 11MM
- 45X95 C24 VÄGGREGEL C/C600MM
- OSBSKIVA 11MM
- GIPSSKIVA 13MM

IV5 INNERVÄGG -ICKE- BÄRANDE (120MM)

- 10MM YTSKIKT ENL. A.
- 100MM LÄTTBETONG
- 10MM YTSKIKT ENL. A.

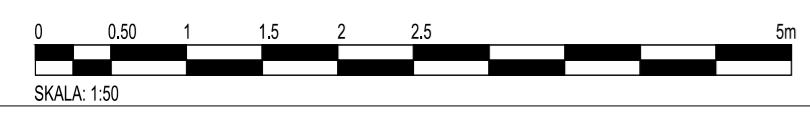
IV6 INNERVÄGG - BÄRANDE (193MM)

- GIPSSKIVA 13MM
- OSBSKIVA 11MM
- 45X145 C24 VÄGGREGEL C/C600MM
- OSBSKIVA 11MM
- GIPSSKIVA 13MM

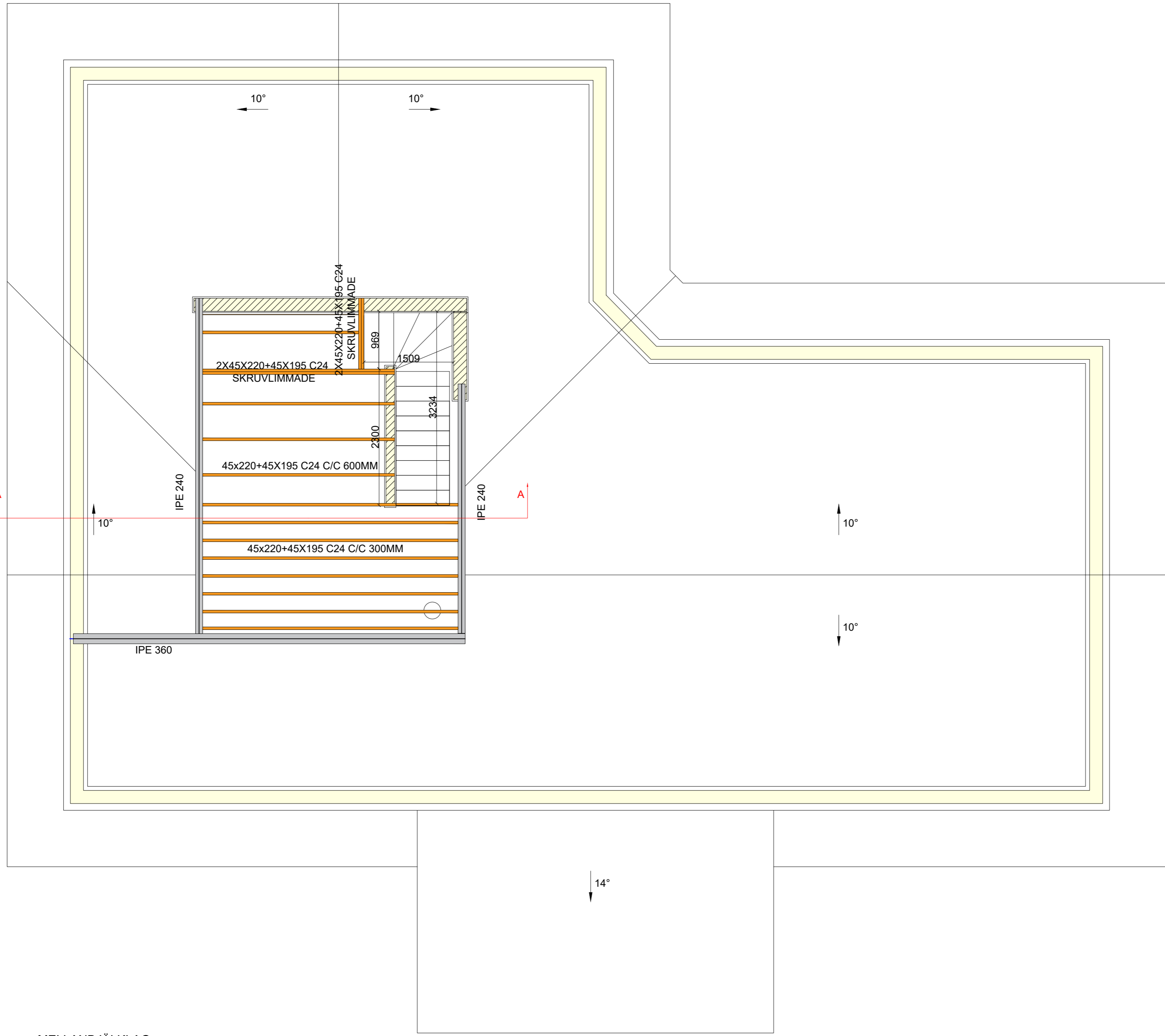
IV7 YTTERVÄGG - BÄRANDE

- PREFABRICERAD YTTERVÄGG

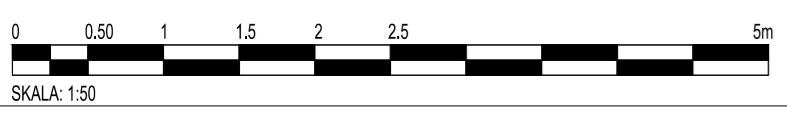
ENTRÉPLAN
1:50



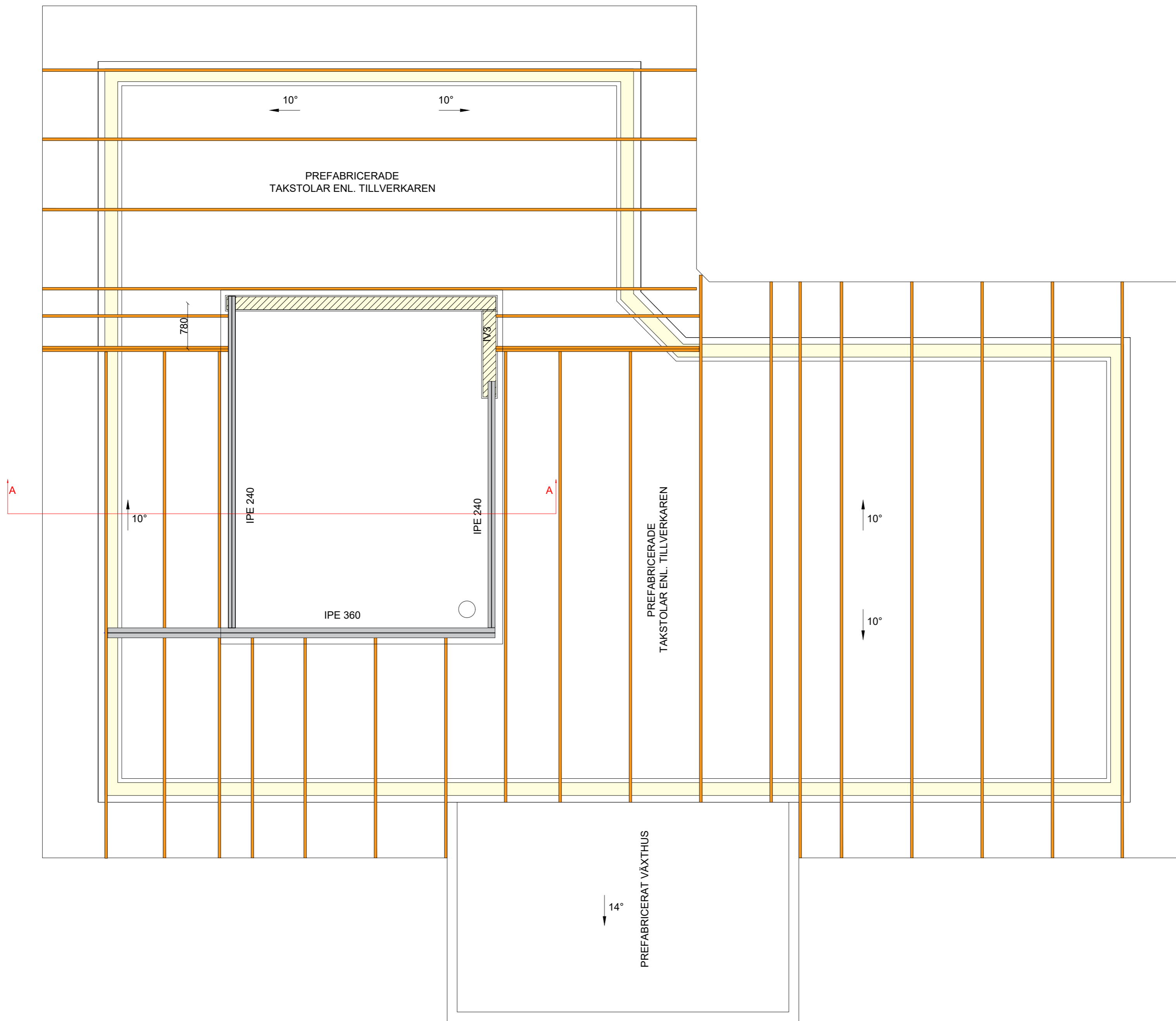
RITNING ENTRÉPLAN		RITNINGNUMMER K03	
RITAD/KONST.AV	DATUM	SKALA	1:50



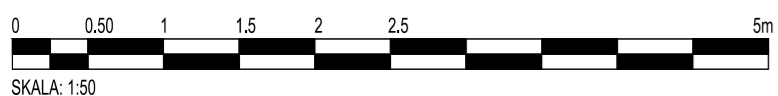
MELLANBJÄKLKLAG
1:50



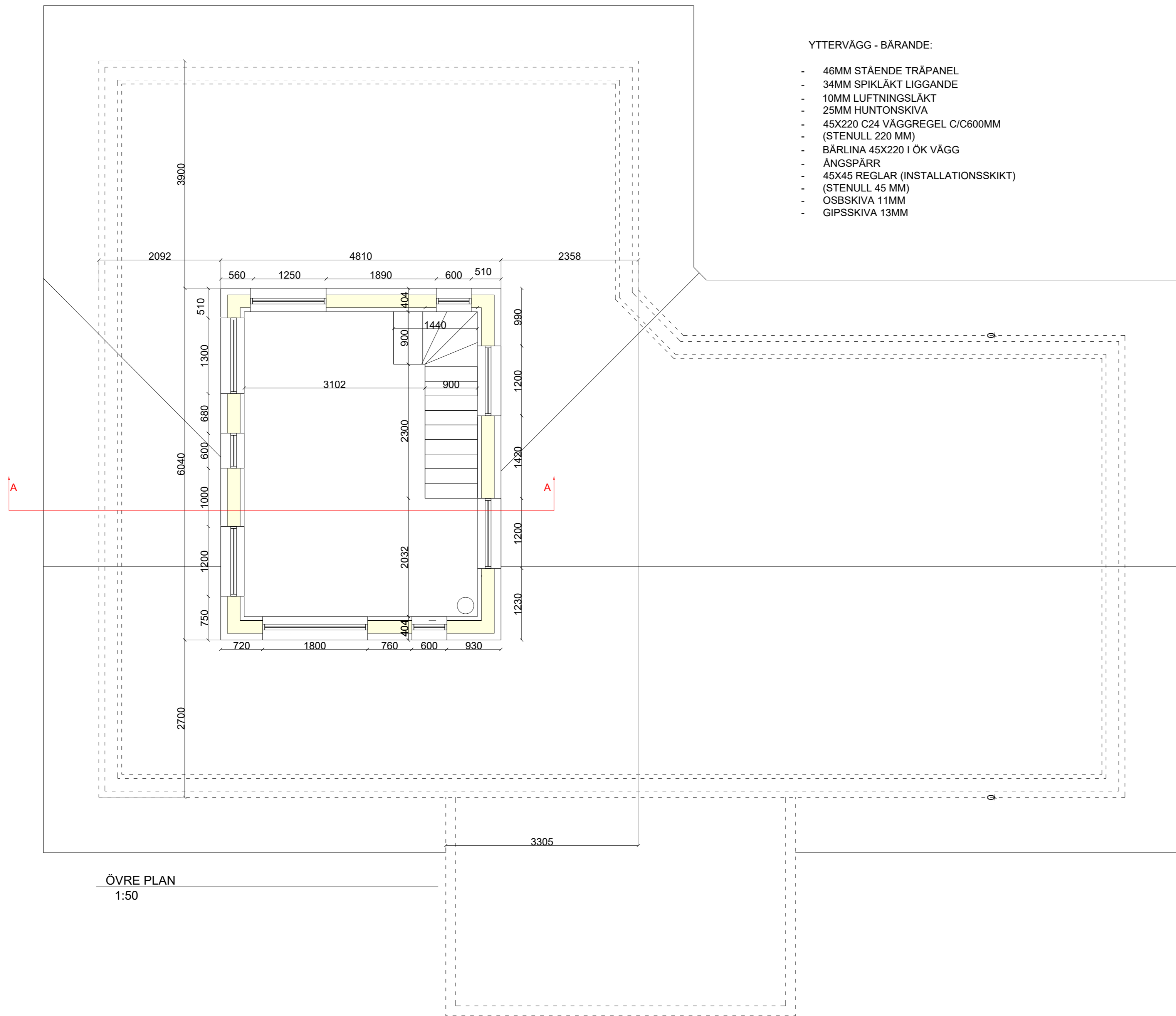
RITNING MELLANBJÄKLKLAG		RITNINGSNUMMER K04	
RITAD/KONST.AV	DATUM	SKALA	1:50



TAKPLAN DEL 1
1:50



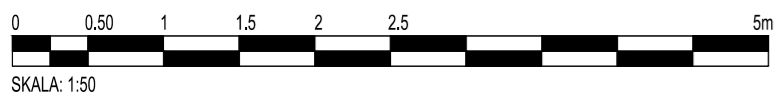
RITNING		RITNINGNUMMER	
TAKPLAN DEL 1		K05	
RITAD/KONST.AV	DATUM	SKALA	
		1:50	



YTTERVÄGG - BÄRANDE:

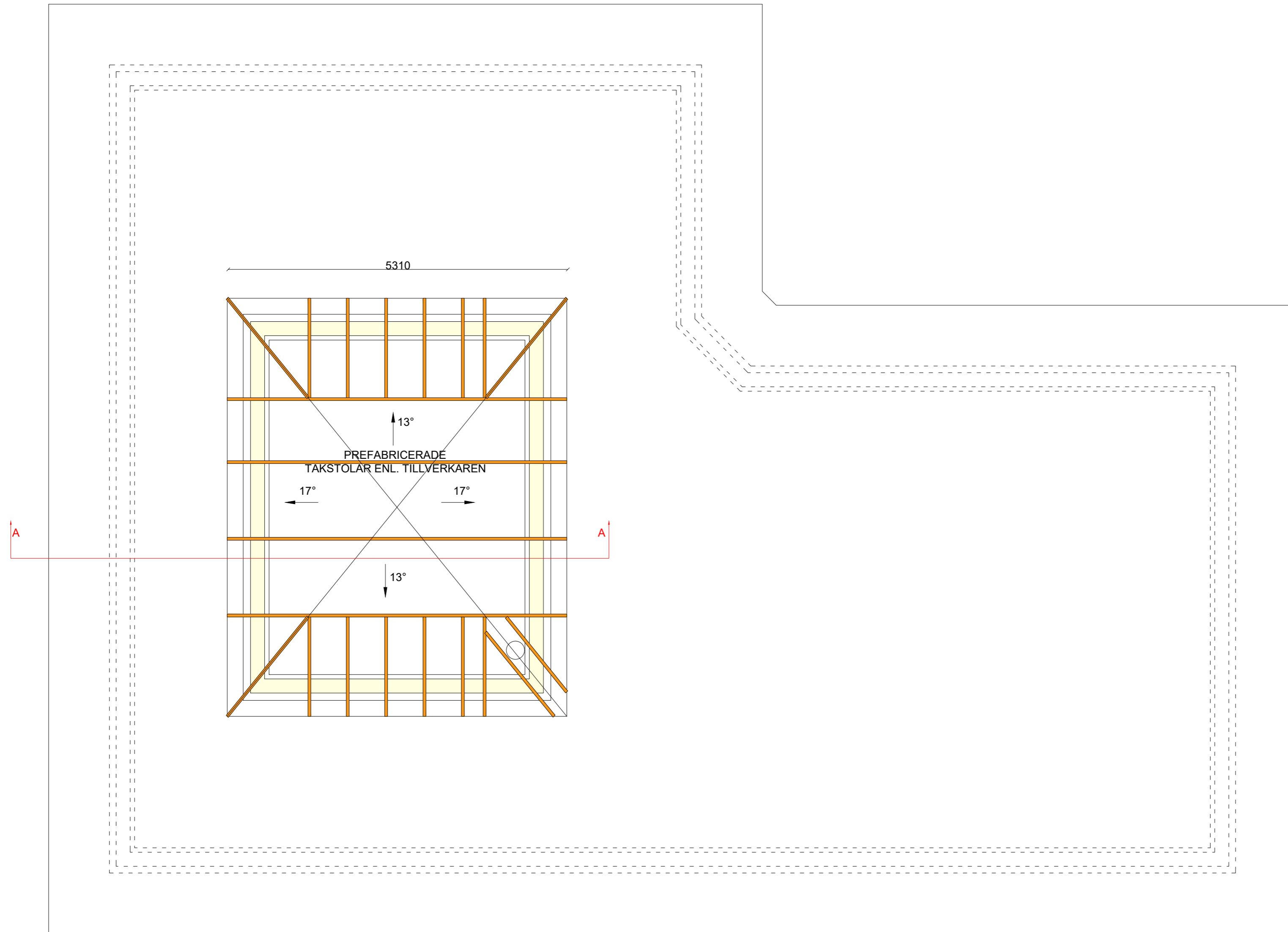
- 46MM STÄENDE TRÅPANEL
- 34MM SPIKLÅKT LIGGANDE
- 10MM LUFTNINGSLÅKT
- 25MM HUNTONSKIVA
- 45X220 C24 VÄGGREGEL C/C600MM
- (STENULL 220 MM)
- BÄRLINA 45X220 I ÖK VÄGG
- ÅNGSPÄRR
- 45X45 REGLAR (INSTALLATIONSSKIKT)
- (STENULL 45 MM)
- OSBSKIVA 11MM
- GIPSSKIVA 13MM

ÖVRE PLAN
1:50

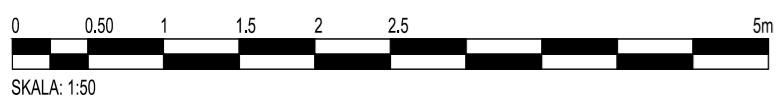


SKALA: 1:50

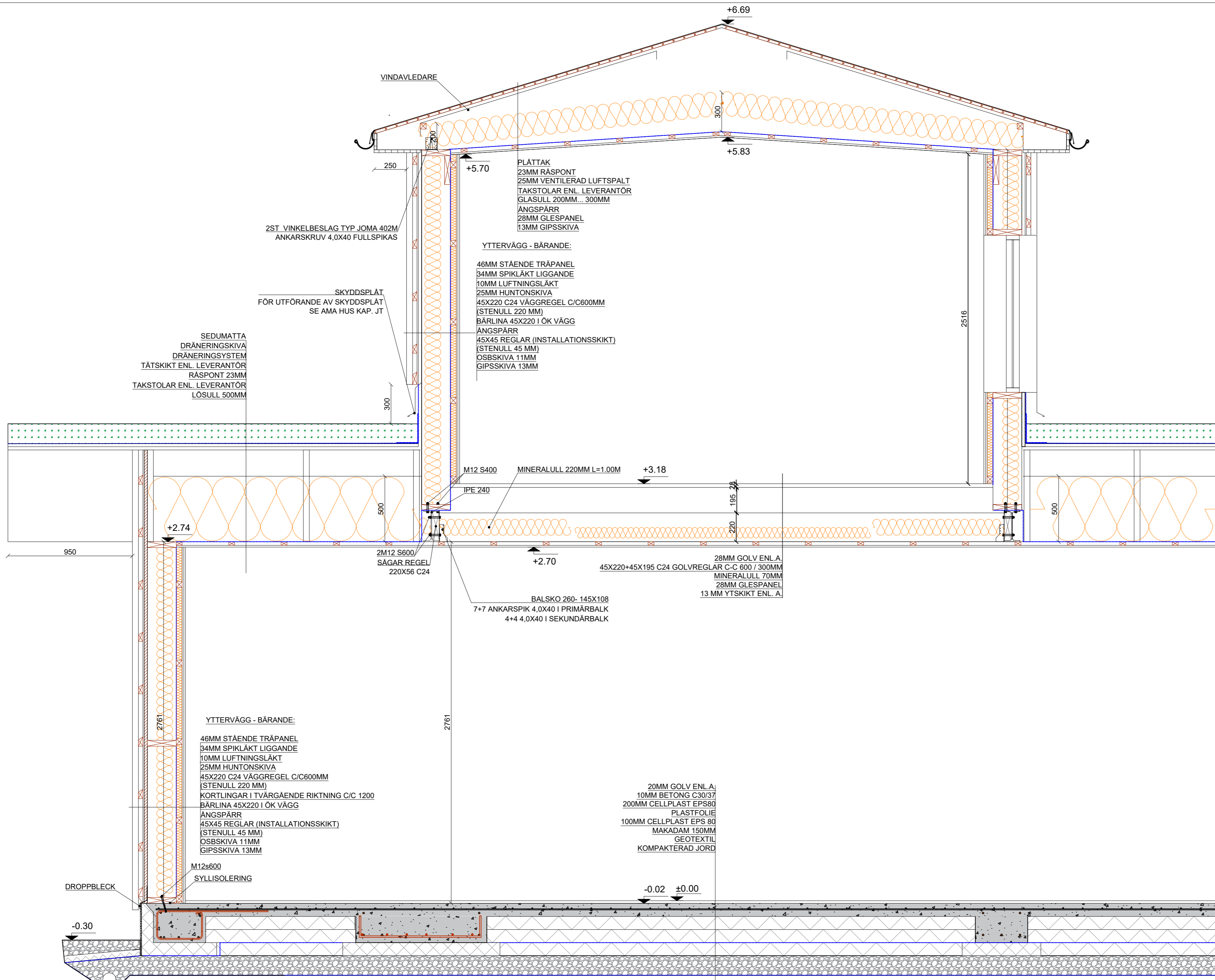
RITNING		RITNINGNUMMER	
ÖVRE PLAN		K06	
RITAD/KONST.AV	DATUM	SKALA	
		1:50	



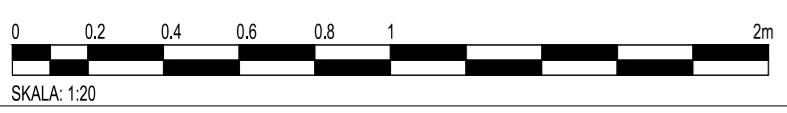
TAKPLAN DEL 2
1:50



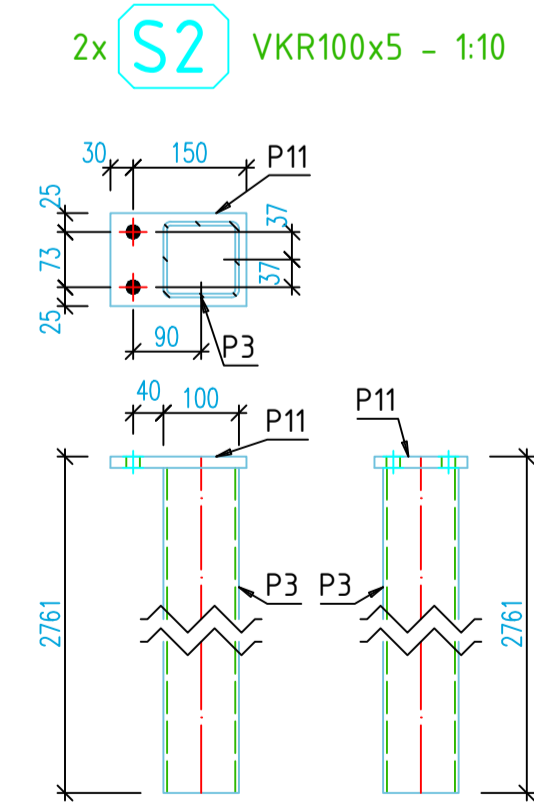
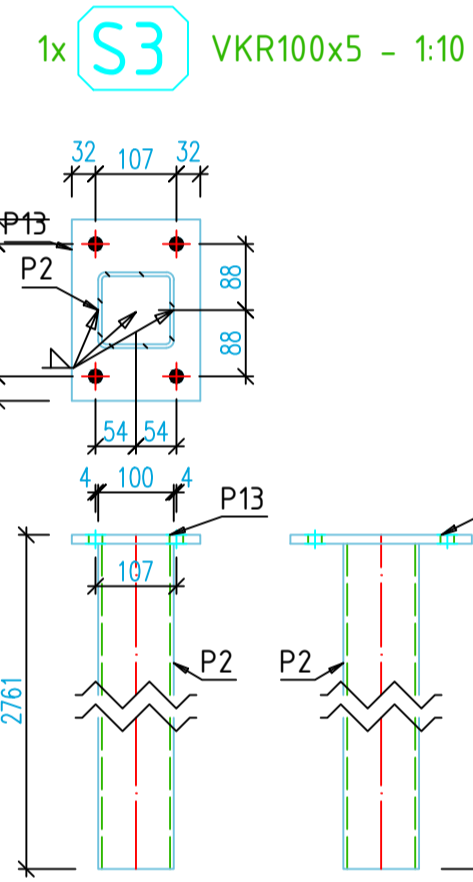
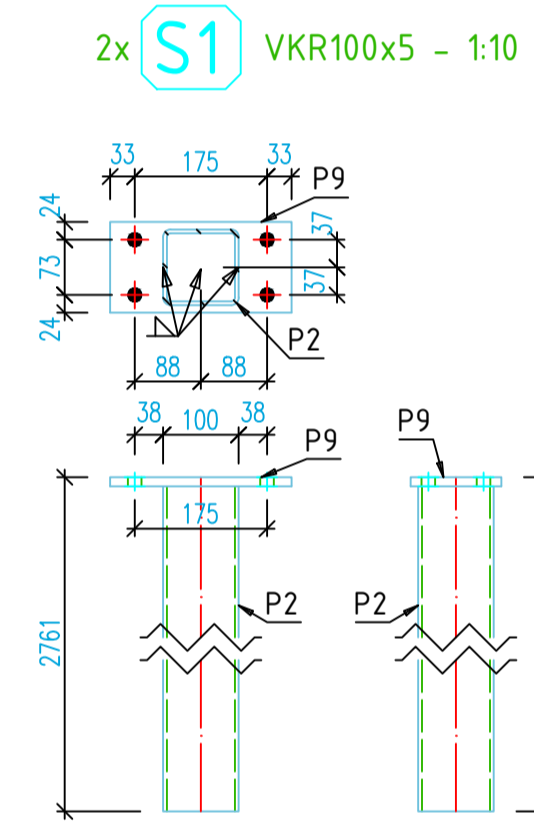
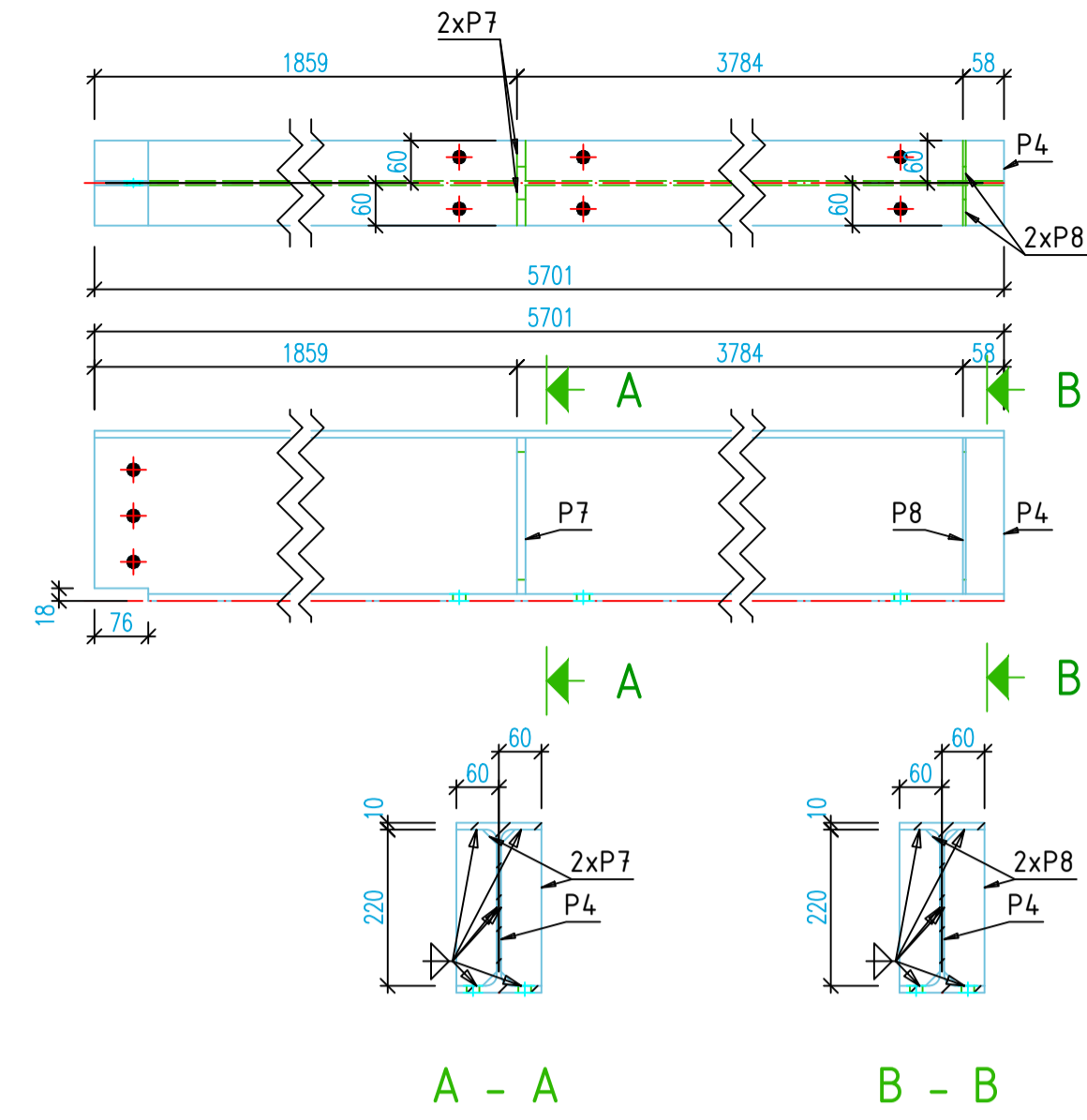
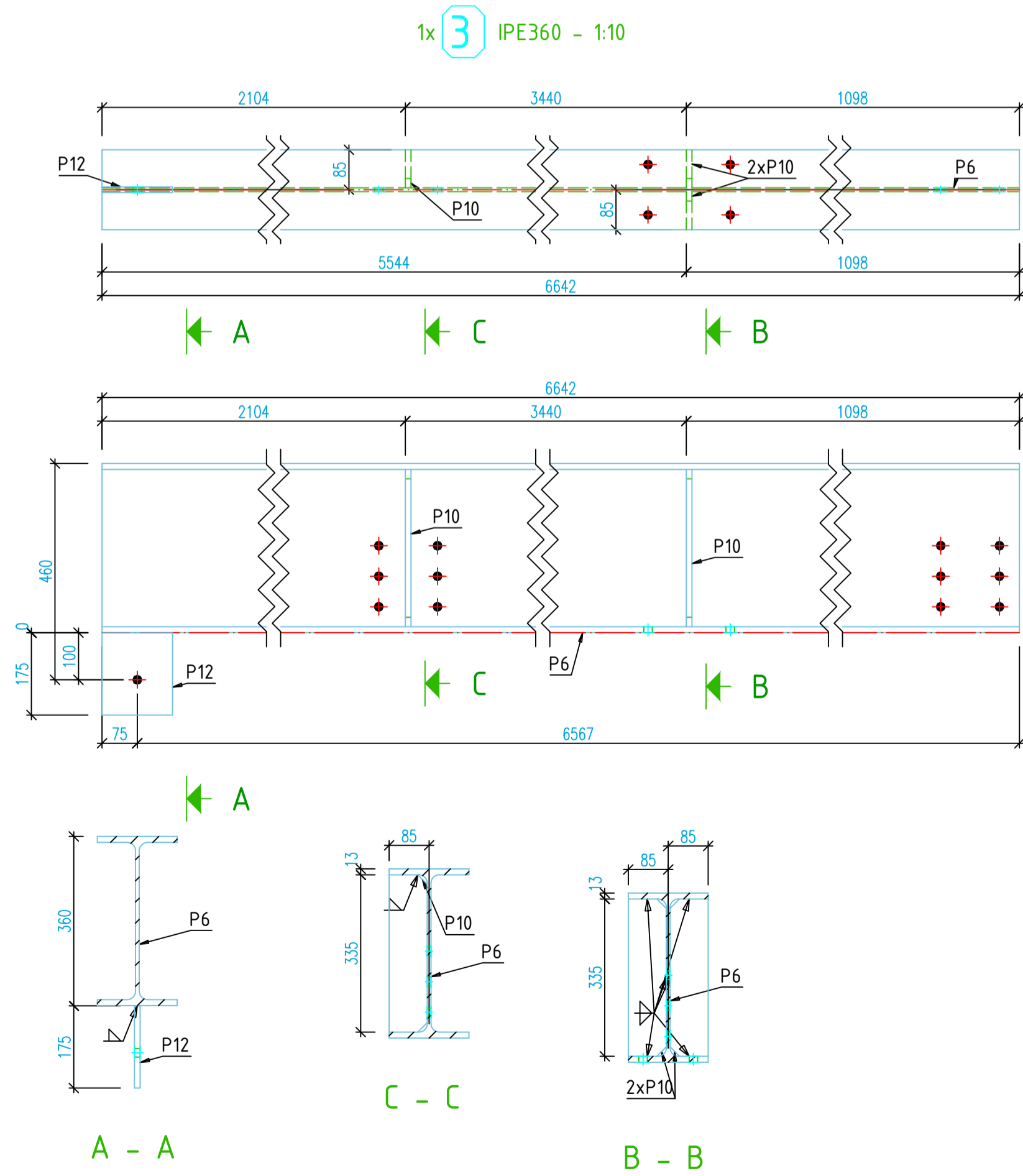
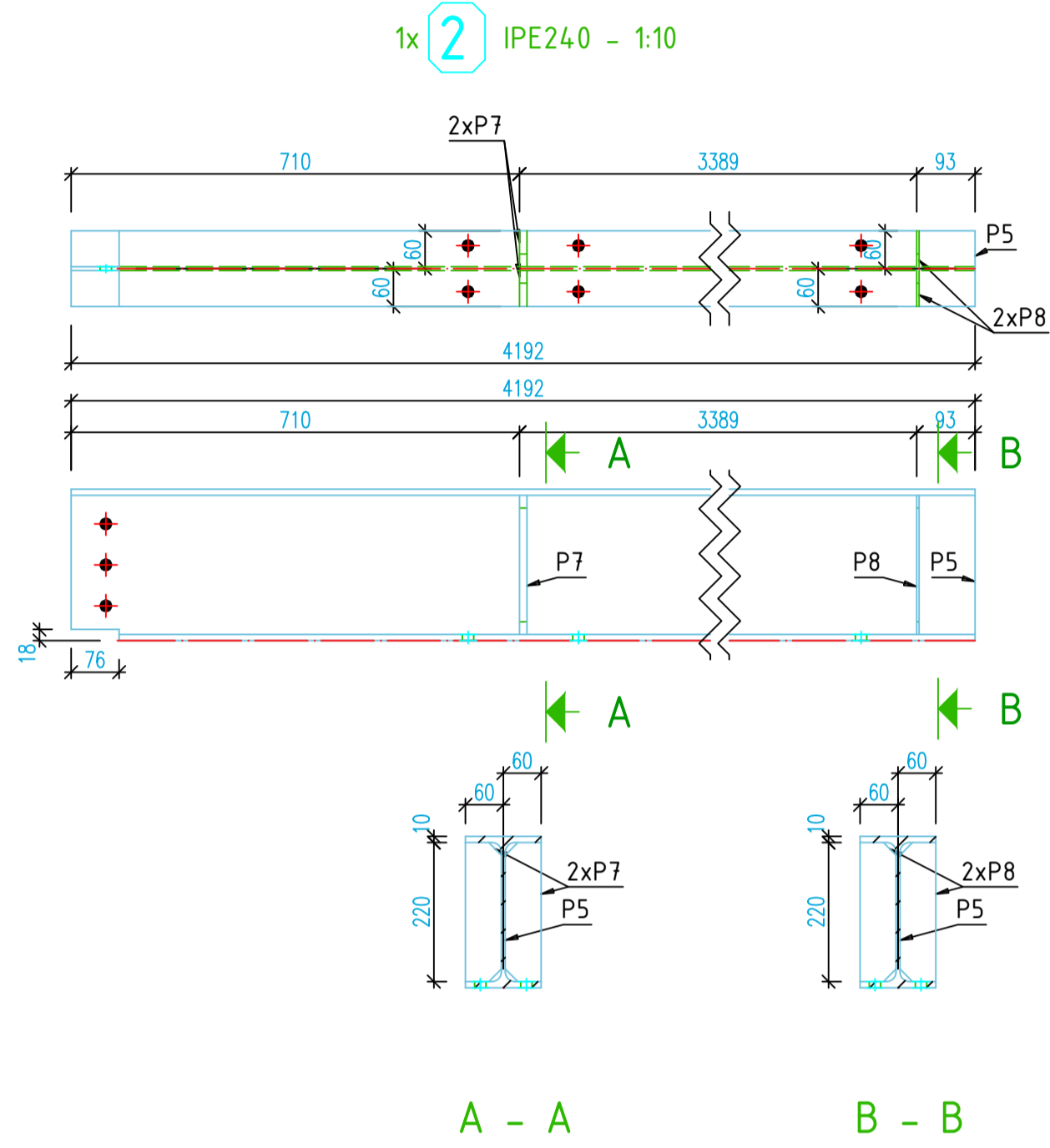
RITNING		RITNINGSNUMMER	
TAKPLAN DEL 2		K07	
RITAD/KONST.AV	DATUM	SKALA	
		1:50	



Sektion A-A
1:20

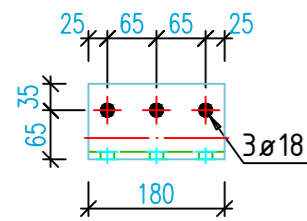
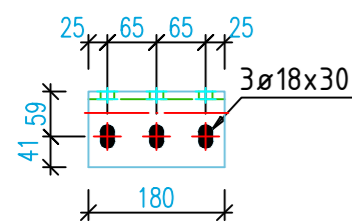


RITNING SEKTION A-A		RITNINGNUMMER K08	
RITAD/KONST.AV	DATUM	SKALA	1:20

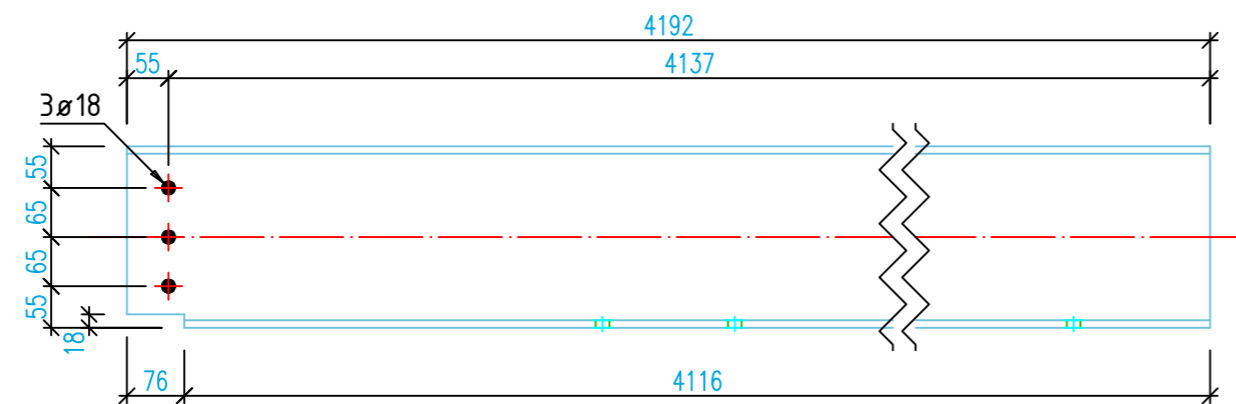
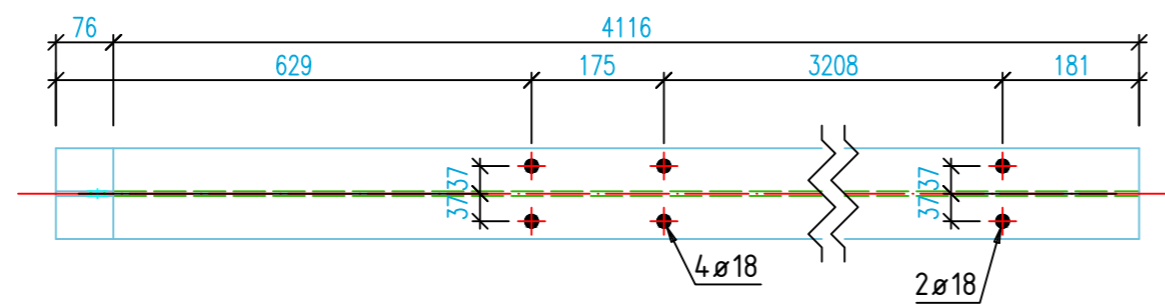


2	1	IPE240				
P5	1	IPE240	4192	S355JR	128.69	128.69
P7	2	PL 12x56.9x220.4	220	S355JR	1.14	2.29
P8	2	PL 4x56.9x220.4	220	S355JR	0.38	0.76
One assembly weight:					131.74	131.74
3	1	IPE360				
P6	1	IPE360	6642	S355JR	379.26	379.26
P10	3	PL 12x81x334.6	335	S355JR	2.52	7.55
P12	1	PL 12x150x175	175	S355JR	2.47	2.47
One assembly weight:					389.28	389.28
4	1	IPE240				
P4	1	IPE240	5701	S355JR	175.02	175.02
P7	2	PL 12x56.9x220.4	220	S355JR	1.14	2.29
P8	2	PL 4x56.9x220.4	220	S355JR	0.38	0.76
One assembly weight:					178.07	178.07
S1	2	VKR100x5				
P2	2	VKR100x5	2749	S355JR	39.59	79.17
P9	2	PL 12x120x240	240	S355JR	2.71	5.43
One assembly weight:					42.3	84.6
S2	2	VKR100x5				
P3	2	VKR100x5	2746	S355JR	39.54	79.08
P11	2	PL 15x123x180	180	S355JR	2.61	5.21
One assembly weight:					42.15	84.3
S3	1	VKR100x5				
P2	1	VKR100x5	2749	S355JR	39.59	39.59
P13	1	PL 12x170x240	240	S355JR	3.84	3.84
One assembly weight:					43.43	43.43
Combined Total						911.42

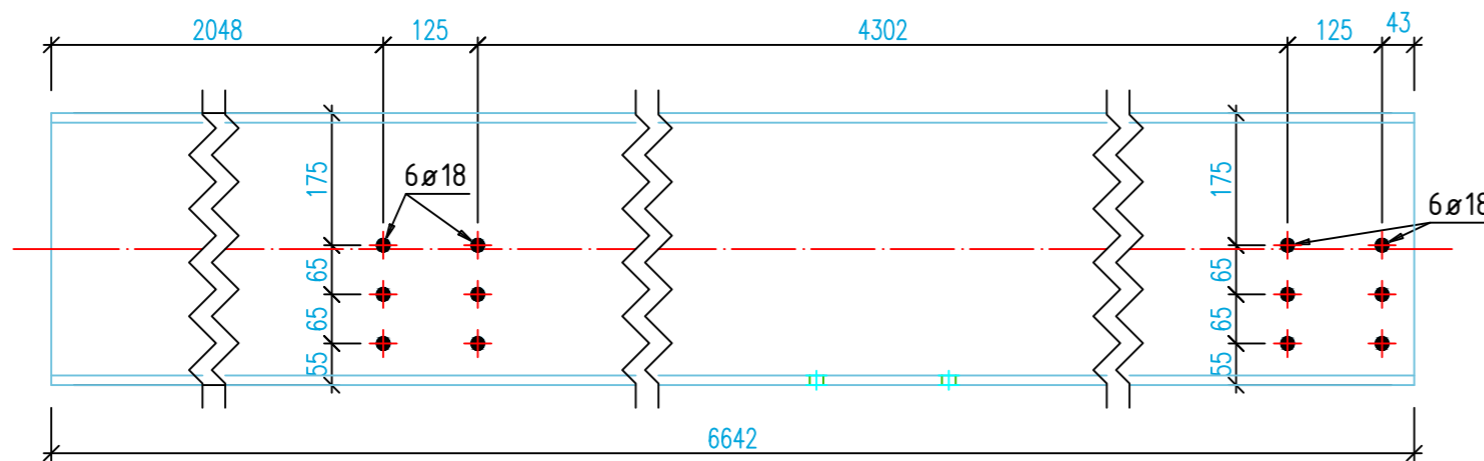
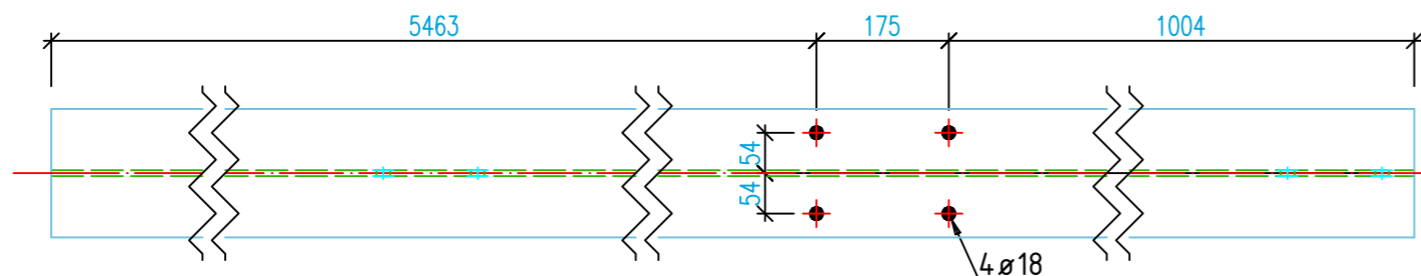
4x **P1** L100X10
S355JR - 1:10



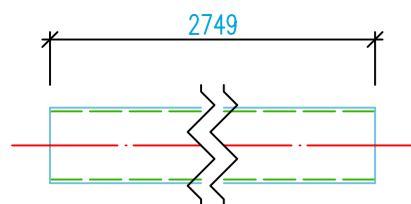
1x **P5** IPE240
S355JR - 1:10



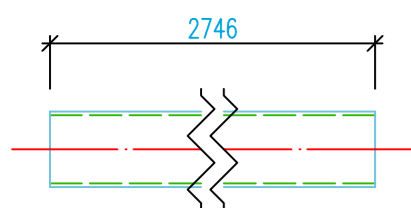
1x **P6** IPE360
S355JR - 1:10



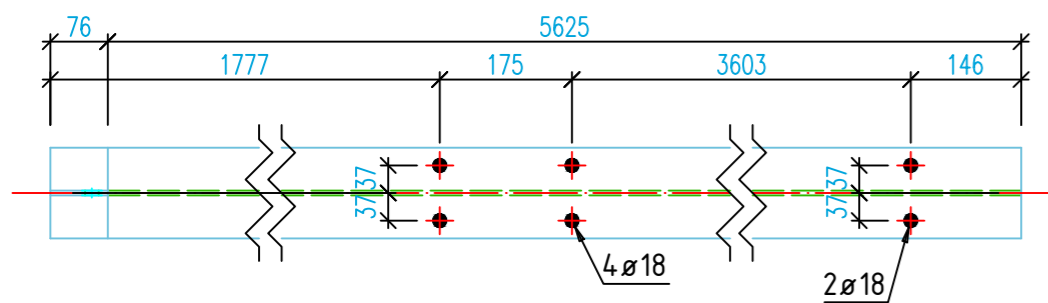
3x **P2** VKR100x5
S355JR - 1:10



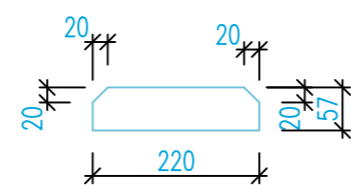
2x **P3** VKR100x5
S355JR - 1:10



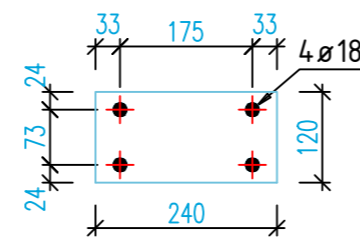
1x **P4** IPE240
S355JR - 1:10



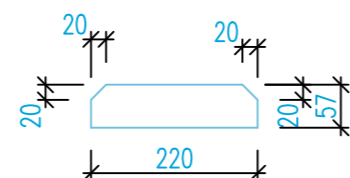
4x **P7** PL 12x56.9x220.4
S355JR - 1:10



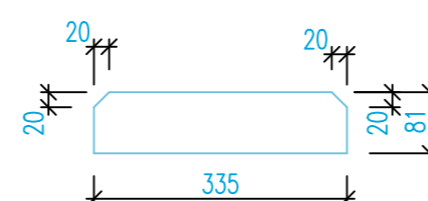
2x **P9** PL 12x120x240
S355JR - 1:10



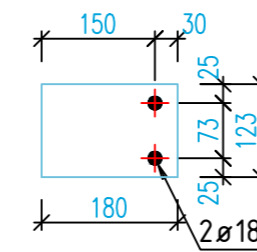
4x **P8** PL 4x56.9x220.4
S355JR - 1:10



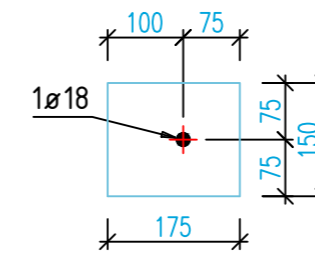
3x **P10** PL 12x81x334.6
S355JR - 1:10



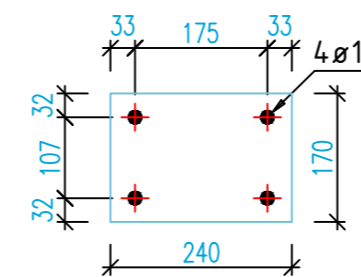
2x **P11** PL 15x123x180
S355JR - 1:10



1x **P12** PL 12x150x175
S355JR - 1:10

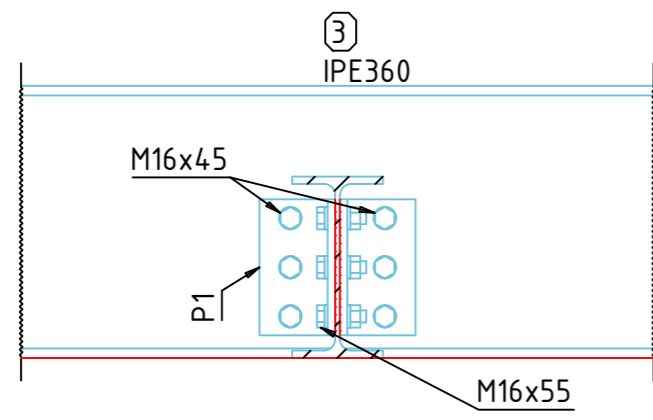


1x **P13** PL 12x170x240
S355JR - 1:10

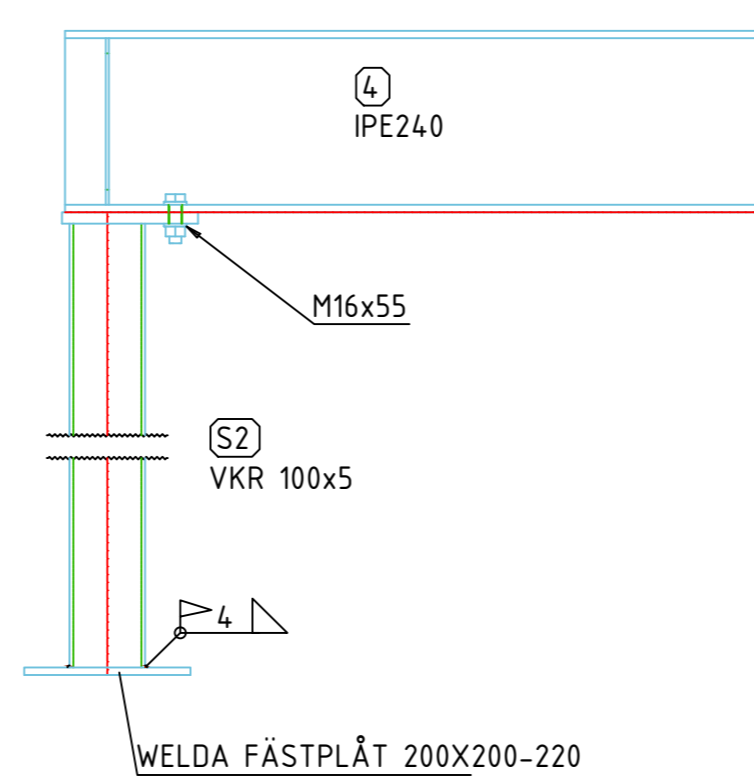


Mark	Quantity	Description	Length	Grade	Part weight	Total weight
P1	4	L100X10	180	S355JR	2.7	10.9
P2	3	VKR100x5	2749	S355JR	39.6	118.8
P3	2	VKR100x5	2746	S355JR	39.5	79.1
P4	1	IPE240	5701	S355JR	175	175
P5	1	IPE240	4192	S355JR	128.7	128.7
P6	1	IPE360	6642	S355JR	379.3	379.3
	12	Combined Total				891.7
P7	4	PL 12x56.9x220.4	220	S355JR	1.1	4.6
P8	4	PL 4x56.9x220.4	220	S355JR	0.4	1.5
P9	2	PL 12x120x240	240	S355JR	2.7	5.4
P10	3	PL 12x81x334.6	335	S355JR	2.5	7.5
P11	2	PL 15x123x180	180	S355JR	2.6	5.2
P12	1	PL 12x150x175	175	S355JR	2.5	2.5
P13	1	PL 12x170x240	240	S355JR	3.8	3.8
	17	Combined Total				30.6

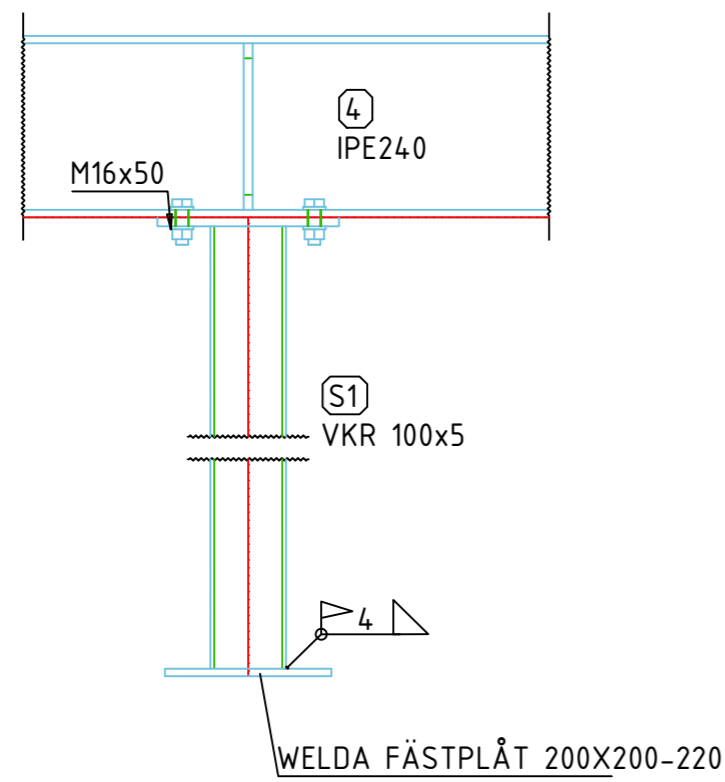
RITNING		RITNINGNUMMER	
DETALJER P1-P13		K10	
RITAD/KONST.AV	DATUM	SKALA	



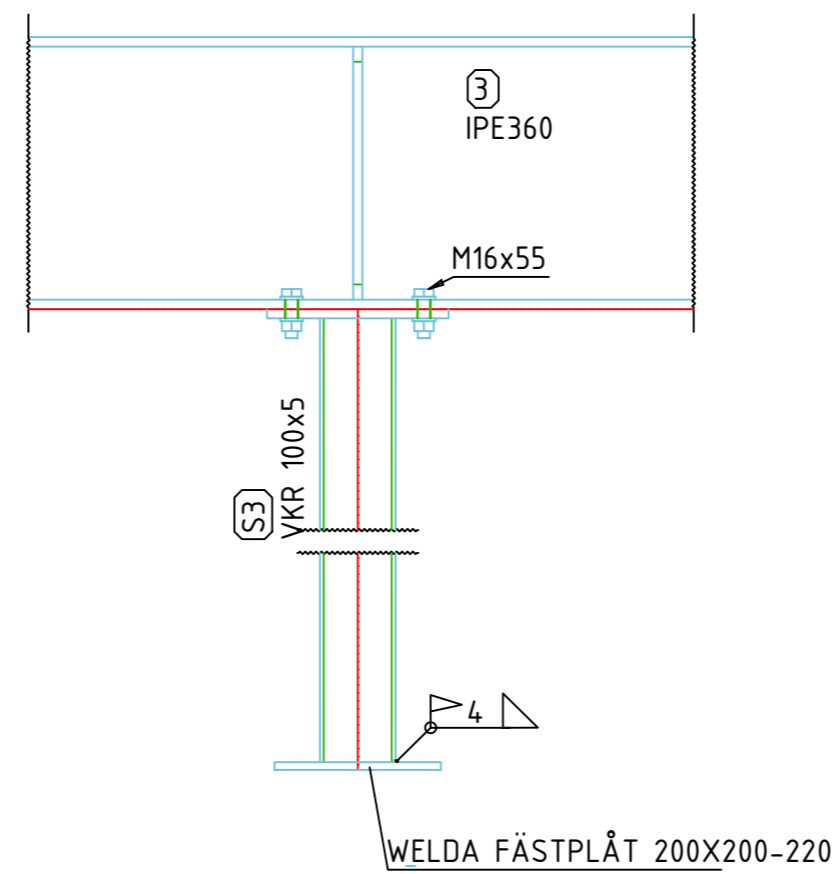
INFÄSTNING BALK 3- BALK 1



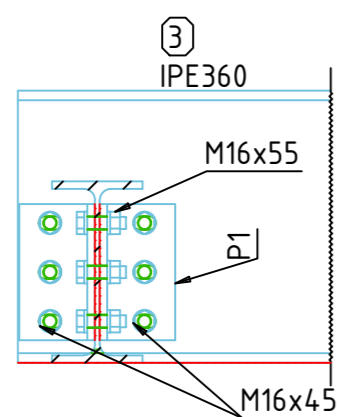
INFÄSTNING S2- BALK 4



INFÄSTNING S1- BALK 4



INFÄSTNING S3- BALK 3



INFÄSTNING BALK 2- BALK 3

RITNING		RITNINGNUMMER	
RITAD/KONST.AV	DATUM	SKALA	